

LEGEND

- Geyserville FPD
- Sonoma County FD
- CSA 40/The Geysers
- Proposed Geyserville FPD ANNEXATION: Knights Valley
- Proposed Geyserville FPD ANNEXATION: IRPs

Parcels 1-5 are one legal parcel per DN2012-047732
 Parcels 1-4 are currently CSA 40/The Geysers
 Parcel 5 is currently Knights Valley VFC
 All parcels are owned by the Audubon Canyon Ranch as part of the Modini Mayacamas Preserve

Parcels 6 and 7 are one legal parcel per DN2012-129213
 Parcel 6 is currently CSA 40/The Geysers
 Parcel 7 is currently Knights Valley VFC
 Both parcels are owned by the Audubon Canyon Ranch as part of the Modini Mayacamas Preserve

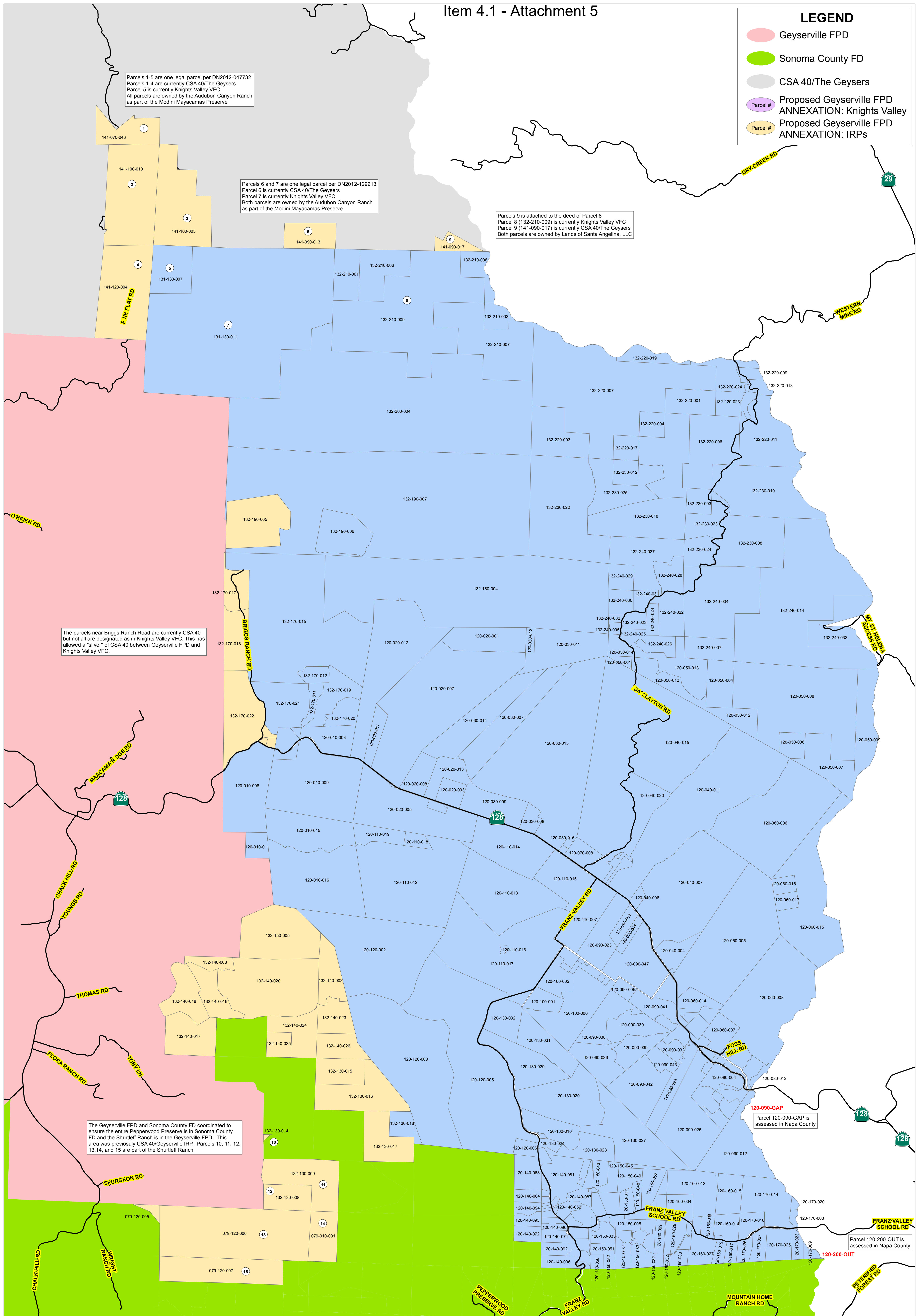
Parcels 9 is attached to the deed of Parcel 8
 Parcel 8 (132-210-009) is currently Knights Valley VFC
 Parcel 9 (141-090-017) is currently CSA 40/The Geysers
 Both parcels are owned by Lands of Santa Angelina, LLC

The parcels near Briggs Ranch Road are currently CSA 40 but not all are designated as in Knights Valley VFC. This has allowed a "sliver" of CSA 40 between Geyserville FPD and Knights Valley VFC.

The Geyserville FPD and Sonoma County FD coordinated to ensure the entire Pepperwood Preserve is in Sonoma County FD and the Shurtleff Ranch is in the Geyserville FPD. This area was previously CSA 40/Geyserville IRP. Parcels 10, 11, 12, 13, 14, and 15 are part of the Shurtleff Ranch

Parcel 120-090-GAP is assessed in Napa County

Parcel 120-200-OUT is assessed in Napa County



**GEYSERVILLE FIRE PROTECTION DISTRICT
 REORGANIZATION No. 18/19-0313-01
 (KNIGHTS VALLEY/IRPs)**

PROPOSED