

Northern Sonoma County Fire Protection District

PLAN FOR SERVICE

Submitted to the Sonoma Local Agency Formation Commission



Marshall Turbeville
March 2022

SUMMARY

The Northern Sonoma County Fire Protection District (district) proposes to annex the following areas of County Service Area Number 40 (CSA – 40):

- The Geysers Area of Integrated Response Plan (IRP) 61
- The Gray Creek Road area of IRP – 61
- IRP – 63 (Fitch Mountain)
- Fire Services Area 64 (Sotoyome) (Lower Dry Creek Valley and Mill Creek Road)

The reason for the proposed annexation is to increase fire and emergency services with an emphasis on prevention, preparedness, and mitigation using a community risk reduction program. The proposed reorganization will allow the development of a regionalized fire agency, the Northern Sonoma County Fire Protection District, which will specialize in a rural service delivery model. A regionalized fire district will allow for an appropriate balance of local control to be responsive to communities needs and the economies of scale to keep costs of operations appropriate for a rural combination (paid and volunteer staffing) organization.

Upon completion of the reorganization, the district will have jurisdiction for fire and emergency responses for approximately 23% of the County of Sonoma’s geographic area with a population of less than 12,000. The most frequent large-scale threat to the district is wildfires, but the district also recognizes the need to improve “routine” emergency services.

The annexed areas will continue to be served by the same agencies that currently provide service, including the City of Healdsburg Fire Department, Cloverdale Fire Protection District, South Lake County Fire Protection District, and CAL FIRE. The Northern Sonoma County Fire Protection District will maintain existing contracts for services and negotiate an enhanced services contract with the South Lake County Fire Protection District for portions of The Geysers service area.

The district’s plan for service establishes service zones (zones) with a customized plan for each zone. The zones are based upon similar geographic areas, existing community organizations, and existing community wildfire protection plans.

FIRE DISTRICT INFORMATION

The Northern Sonoma County Fire Protection District (district) serves over 273 square miles and responds to approximately 600 emergencies each year. The district serves approximately 7,000 residents in Knights Valley, Franz Valley, Alexander Valley, Chalk Hill, Upper Dry Creek Valley, Geyserville, and parts of unincorporated Healdsburg and Lake Sonoma.

The district employs 6 paid firefighters, 3 paid intern firefighters, 1 part-time fire chief, 1 part-time administrative manager, 20 volunteer firefighters and a vegetation management (fuels) crew consisting of all part-time employees.

The district is the result of several consolidations

- 1975: The Geyserville Volunteer Fire Company took in the boundaries of the Alexander Valley School District and formed the Alexander Valley Division of the Geyserville Volunteer Company
- 1996: The Geyserville Volunteer Fire Company formed an independent fire district named the Geyserville Fire Protection District. The Geyserville Fire Protection District annexed the Lake Sonoma Area after formation.
- 2019: The Geyserville Fire Protection District annexed the Knights and Franz Valley areas, previously served by the Knights Valley Volunteer Fire Company.
- 2020: The Geyserville Fire Protection District was renamed the Northern Sonoma County Fire

Protection District. The Northern Sonoma County Fire Protection District entered into a joint powers agreement with the Cloverdale Fire Protection District.

PROJECTED BUDGET

The County of Sonoma and the district have executed a funding agreement that will transfer all of the property tax revenue designated for fire protection services from the County to the district. The agreement has a phased transfer period, with full revenue transfer occurring in 2027.

The primary use of this funding will be to:

- Employ one fire prevention employee to perform defensible space inspection, business inspections, and vegetation management support functions
- Employ two permanent vegetation management employees to provide full time fuel vegetation management crew supervision and project management
- Renew and expand the contracts for services with the City of Healdsburg and South Lake County Fire Protection District

The City of Healdsburg currently has a (paid) contract with the County of Sonoma to provide fire and emergency response services to the Gray Creek Road area of IRP – 61, IRP – 63 (Fitch Mountain), and Fire Services Area 64. The County of Sonoma also provides the City of Healdsburg a water tender as part of this contract. The district plans to assume the role of the County of Sonoma and maintain this existing contract and arrangement for the water tender. Preliminary discussions have occurred between the district fire chief and City of Healdsburg Fire Chief with formal negotiation discussions expected to be initiated upon LAFCO's approval of the district's annexation. The City of Healdsburg will continue to provide services if there is a gap between having a contract with the County of Sonoma and having a contract with the district. It is expected that the cost of the contract will increase to approximately \$200,000 per year and may include additional services in addition to fire and emergency response. Additional services may include fire investigation services and defensible space inspections.

The district has an automatic aid agreement with the South Lake County Fire Protection District to provide fire and emergency services to the eastern portion of Ida-Clayton Road. The South Lake County Fire Protection District has a paramedic staffed fire station in Cobb which is closer to a majority of the geothermal power plants and associated functions in The Geysers. The Northern Sonoma County Fire Protection District intends to negotiate a (paid) contract with the South Lake County Fire Protection District to provide fire and emergency response services in the geothermal area and collaborate with the South Lake County Fire Protection District to implement wildfire mitigation projects, training for businesses, and other projects that improve fire and emergency services.

The district receives its baseline funding from property taxes. The district's 2021/2022 projected property tax revenue is \$1,202,014. Other sources of income, such as grants, augment the property tax revenue but are variable on an annual basis.

The tax exchange agreement with the County of Sonoma provides the district with all taxes generated from the annexed areas except for IRP – 61 (The Geysers), for the next five years, and then the full amount of taxes generated in The Geysers at the start of year six. The total, \$1,361,614, was estimated using fiscal year 2020/2021 data provided by the County of Sonoma and an annual assessed property tax increase of 2.5%. This estimate includes the special taxes levied by the Dry Creek Community Facilities District #5 at a set value of \$109,655.

Increased revenue in Year 1 of Annexation (2022/2023)

IRP 61 The Geysers	IRP 61 Gray Creek	IRP 63 Fitch Mtn	FSA 64 Sotoyome	TOTAL
\$592,636	\$5,253	\$212,823	\$550,902	\$1,361,614

Projected Increased Revenue for Years 1 Thru 6 From Annexed Areas

Year Fiscal Year	IRP 61 The Geysers	IRP 61 Gray Creek	IRP 63 Fitch Mtn	FSA 64 Sotoyome	TOTAL
1 2022/2023	\$592,636	\$5,253	\$212,823	\$550,902	\$1,361,614
2 2023/2024	\$607,452	\$5,384	\$218,144	\$561,933	\$1,392,913
3 2024/2025	\$622,638	\$5,519	\$223,597	\$573,240	\$1,424,994
4 2025/2026	\$638,204	\$5,657	\$229,187	\$584,829	\$1,457,877
5 2026/2027	\$654,159	\$5,798	\$234,917	\$596,709	\$1,491,583
6 2027/2028	\$956,437	\$5,943	\$240,790	\$608,885	\$1,812,055

Total Revenue and Expenses for Years 1 Thru 6

Year Fiscal Year	Total Revenue	Personnel		Other Costs	Contract for Services	Excess
		Firefighters	Prevention			
1 2022/2023	\$2,593,678	\$1,054,608	\$300,000	\$650,000	\$505,000	\$84,070
2 2023/2024	\$2,602,556	\$1,080,973	\$307,500	\$666,250	\$517,625	\$30,208
3 2024/2025	\$2,657,058	\$1,107,997	\$315,188	\$682,906	\$530,566	\$20,402
4 2025/2026	\$2,689,942	\$1,135,697	\$323,067	\$699,979	\$543,830	(\$12,631)
5 2026/2027	\$2,723,647	\$1,164,090	\$331,144	\$717,478	\$557,426	(\$46,490)
6 2027/2028	\$3,044,119	\$1,193,192	\$339,422	\$735,415	\$571,361	\$204,729

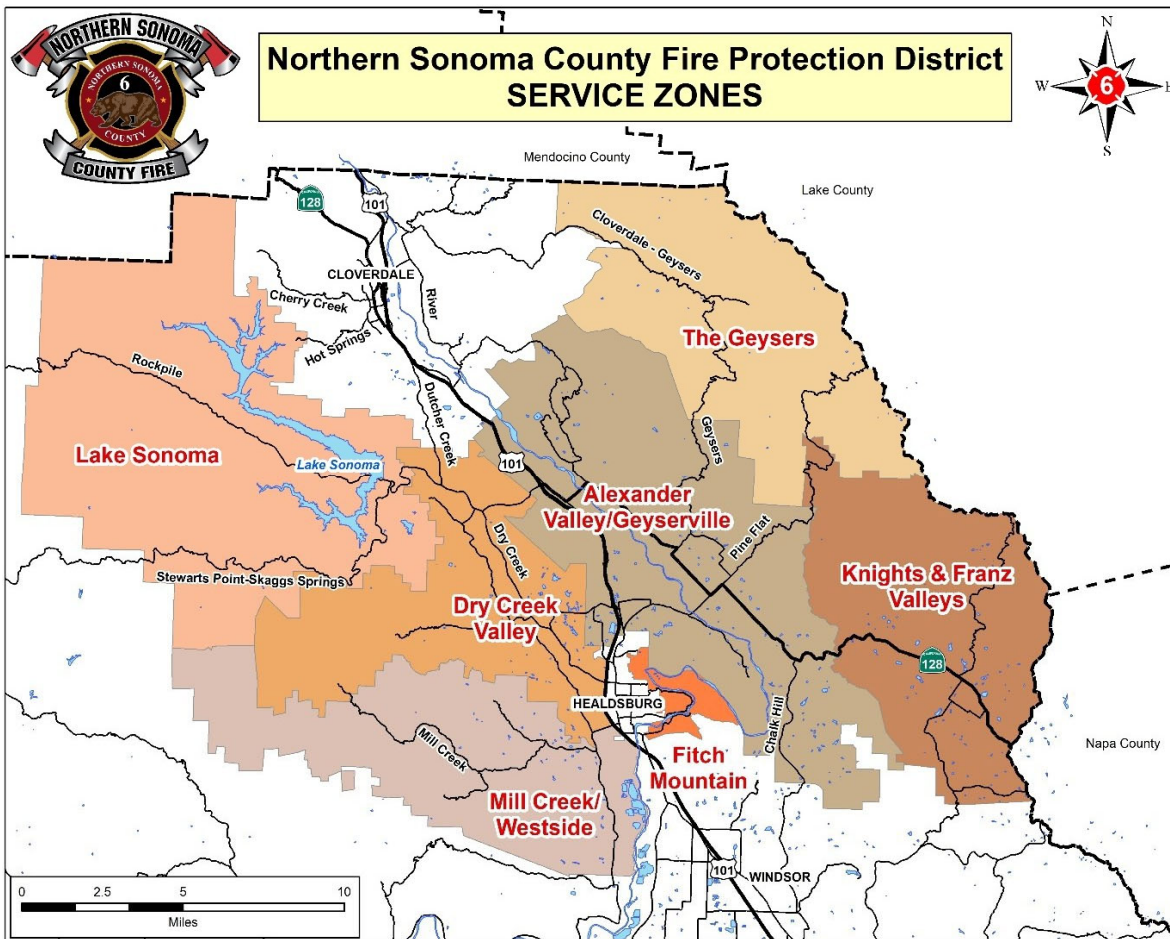
SERVICE ZONES

The Northern Sonoma County Fire Protection District (district) plans to establish the following seven service zones (zones). Preparedness, prevention, and vegetation management activities will occur in all zones. Each zone has a different number of residents, businesses, visitors, response agencies, etc. and as such a different number of calls for service necessitating a unique plan of service.

- Alexander Valley/Geyserville
- Dry Creek Valley
- Fitch Mountain
- Knights and Franz Valleys

- The Geysers
- Lake Sonoma
- Mill Creek/Westside

Service Zone	Square Miles	Acres
Alexander Valley/Geyserville	87.5	55,981
Dry Creek Valley	48.8	31,222
Fitch Mountain	4.1	2,632
Knights and Franz Valleys	55.6	35,605
The Geysers	58.3	37,270
Lake Sonoma	107.6	68,872
Mill Creek/Westside	53.3	34,144
TOTAL	415	265,726



Alexander Valley/Geyserville Zone

This service zone includes the Alexander Valley, including the communities of Geyserville and Jimtown. Geyserville is the most densely populated community in the district.

Fire and Emergency Response

- Response from staffed fire station in Geyserville
- Automatic and mutual aid from Dry Creek Rancheria Fire Department and CAL FIRE
- Volunteer fire station in Alexander Valley with staffing during predicted weather events, flooding,

etc.

- Future goal is a staffed fire station in the southern area of the Alexander Valley to provide better service to the Chalk Hill Road Community and the Knights and Franz Valleys

Dry Creek Valley Zone

This service zone includes the Dry Creek Valley from Westside Road to Lake Sonoma including Dutcher Creek Road, Canyon Road, Lytton Springs Road, and Chiquita Road.

Fire and Emergency Response

- Staffed fire station in Geyserville
- Automatic and mutual aid from Healdsburg City Fire Department, Cloverdale Fire Protection District, and CAL FIRE. Part of the area is contracted automatic aid from the City of Healdsburg.
- Volunteer fire station in Dry Creek Valley

Fitch Mountain Zone

This service zone is directly east of the City of Healdsburg and generally west of the Russian River, and includes the Rio Lindo Academy and Bailhache Avenue area. The City of Healdsburg owns and operates the Healdsburg Ridge Open Space and Fitch Mountain Park and Open Space Preserve which are located in this zone. These areas abut homes in the wildland urban interface. The district will work with the City of Healdsburg to reduce the wildfire risk and structure loss associated with these properties including active vegetation management.

Fire and Emergency Response

- Contracted automatic aid from Healdsburg City Fire Department
- The emphasis for this zone is to ensure proper defensible space, encourage appropriate building construction, and perform vegetation management projects to reduce wildfire hazard risk

Knights and Franz Valleys Zone

This service zone was primarily within the previous boundary of the Knights Valley Volunteer Fire Company. The eastern portion of both valleys are adjacent to Napa County and closer to the City of Calistoga.

Fire and Emergency Response

- Contracted automatic aid from Calistoga City Fire Department
- Automatic and mutual aid from the Dry Creek Rancheria Fire Department
- The emphasis for this zone is to increase individual preparedness and continue vegetation management projects.
- Future goal is a fire station that can be staffing during predicted weather events, flooding, etc. and provide a facility that a vegetation management crew can operate from
- Future goal is a staffed fire station in the southern area of the Alexander Valley to provide better service to the Chalk Hill Road Community and the Knights and Franz Valleys
- Future goal is to implement large scale vegetation management including prescribed burning

The Geysers Zone

This service zone contains Calpine and Northern California Power Authority (NCPA) power plants that generate electricity from steam. Very few residents live in the service zone and this area has the highest frequency of wildfires within the County of Sonoma. CAL FIRE has a Wildland Fire Operating Plan (AOP) with The Geysers Steamfield Operators. The AOP has a list of projects to improve fire and emergency response.

Fire and Emergency Response

- Automatic aid from the South Lake County Fire Protection District
- Future goal is a contract with the South Lake County Fire Protection District to provide enhanced services including training to Calpine and NCPA staff
- Future goal is to work with cooperating entities to implement projects identified in the AOP
- Future goal is to implement strategic fire breaks using pre-existing road, fire roads, and dozer lines
- Future goal is to implement large scale vegetation management including prescribed burning

Lake Sonoma Zone

This service zone includes the entire United States Army Corps (USAC) Lake Sonoma property and all properties accessed from Rockpile Road and Stewarts Point-Skaggs Springs Road that are within the district.

The northern boundary of this zone is the Mendocino County line. Lake Sonoma provides drinking water to 600,000 people in Sonoma and Marin counties with the water being managed by Sonoma Water. Lake Sonoma also provides recreational opportunities including boating, camping, hiking, bicycle riding, horse riding, and archery.

Fire and Emergency Response

- Response from staffed fire station in Geyserville
- Automatic aid from the Cloverdale Fire Protection District for the Yorty Creek Day use area
- Future goal is to work with USAC to implement vegetation management including broadcast burning
- Future goal is to implement large scale vegetation management including prescribed burning

Mill Creek/Westside Zone

This service area includes the most southern area of the Dry Creek Valley, Mill Creek Road Community, and Westside Road residents south to Sweetwater Springs Road.

Fire and Emergency Response

- Contracted automatic aid from Healdsburg City Fire Department
- Implement projects identified in the Mill Creek Community Wildfire Protection Plan
- The emphasis for this zone is to ensure proper defensible space, encourage appropriate building construction, and perform vegetation management projects

Northern Sonoma County Fire Protection District Reorganization No. 2021-03 (CSA 40 Territories)

Factors for Consideration (California Government Code §56668)

- (a) ***Population and population density; land area and land use; per capita assessed valuation; topography, natural boundaries, and drainage basins; proximity to other populated areas; the likelihood of significant growth in the area, and in adjacent incorporated and unincorporated areas, during the next 10 years.***

As noted in a Municipal Service Review for Northern Sonoma County Fire Protection District, population growth in the region is low and is not the predominant factor driving service needs. Other factors, such as an aging population, transient populations (tourism related), and even higher expectations for emergency medical services are more significant factors.

In summary, none of the factors in this section are determinants of fire and emergency service provision growth.

- (b) ***Need for organized community services; the present cost and adequacy of governmental services and controls in the area; probable future needs for those services and controls; probable effect of the proposed incorporation, formation, annexation, or exclusion and of alternative courses of action on the cost and adequacy of services and controls in the area and adjacent areas. "Services," as used in this subdivision, refers to governmental services whether or not the services are services that would be provided by local agencies subject to this division, and includes the public facilities necessary to provide those services.***

The proposed reorganization identifies funding sources that would support the continued provision of fire and emergency services to the affected territories.

- (c) ***The effect of the proposed action and of alternative actions, on adjacent areas, on mutual social and economic interests, and on the local governmental structure of the county.***

The affected territories are located within unincorporated Sonoma County and within the District's sphere of influence, making it eligible for annexation. The reorganized District will continue to provide mutual aid to other fire service providers in the area, as needed. No negative effects of the reorganization are anticipated.

- (d) ***The conformity of both the proposal and its anticipated effects with both the adopted commission policies on providing planned, orderly, efficient patterns of urban development, and the policies and priorities set forth in Section 56377. (Note: Section 56377 encourages preservation of agricultural and open-space lands.)***

The proposal is consistent with Commission policies. The affected territory is within the District's sphere of influence and contiguous to the District boundary.

(e) *The effect of the proposal on maintaining the physical and economic integrity of agricultural lands, as defined by Section 56016.*

Some properties within the affected territories are agricultural or open space. Annexation of these territories to Northern Sonoma County Fire Protection District will not impact the existence of or activities on agricultural or open space lands.

(f) *The definiteness and certainty of the boundaries of the territory, the nonconformance of proposed boundaries with lines of assessment or ownership, the creation of islands or corridors of unincorporated territory, and other similar matters affecting the proposed boundaries.*

The parcels that comprise the affected territories have specific boundary lines that are certain and identifiable.

(g) *A regional transportation plan adopted pursuant to Section 65080.*

Annexation of the affected territory would not affect or be affected by Plan Bay Area, the Regional Transportation Plan for the San Francisco Bay Area, in that the Plan focuses growth in Priority Development Areas (PDA). The affected territory is not within a PDA.

(h) *The proposal's consistency with city or county general plans.*

The proposal is consistent with the Sonoma County General Plan in that it does not promote urban sprawl and the District can provide the necessary services to the affected territories.

(i) *The sphere of influence of any local agency that may be applicable to the proposal being reviewed.*

The affected territory is located within the Northern Sonoma County Fire Protection District's sphere of influence and are not located within the sphere of influence of any other agency that provides fire and emergency services.

(j) *The comments of any affected local agency or other public agency.*

No agency comments have been received.

(k) *The ability of the newly formed or receiving entity to provide the services which are the subject of the application to the area, including the sufficiency of revenues for those services following the proposed boundary change.*

The Northern Sonoma County Fire Protection District has identified suitable funding sources to enable the continued provision of fire and emergency medical services to the affected territories and to the region.

- (l) ***Timely availability of water supplies adequate for projected needs as specified in Section 65352.5.***

Not applicable.

- (m) ***The extent to which the proposal will affect a city or cities and the county in achieving their respective fair shares of the regional housing needs as determined by the appropriate council of governments consistent with Article 10.6 (commencing with Section 65580) of Chapter 3 of Division 1 of Title 7.***

Not applicable

- (n) ***Any information or comments from the landowner or owners, voters, or residents of the affected territory.***

No comments have been received.

- (o) ***Any information relating to existing land use designations.***

The affected territories are unincorporated, subject to the Sonoma County General Plan. No change is projected in land-use designations as a result of the proposal.

- (p) ***The extent to which the proposal will promote environmental justice. As used in the law, “environmental justice” means the fair treatment of people of all races, cultures, and incomes with respect to the location of public facilities and the provision of public services.***

The proposal makes no representations or exclusions of peoples of any race, culture and/or income with respect to location of public facilities and public services.

Item 5.1 - Attachment 3

Draft Resolution

111 Santa Rosa Avenue, Ste. 240
Santa Rosa, CA 95404

September 7, 2022

Resolution of the Local Agency Formation Commission of the County of Sonoma, State of California, Making Findings and Determinations, Determining Exemption from the California Environmental Quality Act, Approving a Reorganization of Territory Designated as: Northern Sonoma County Fire Protection District Reorganization No. 2021-03 County Service Area 40 Territories) Involving Detachment of County Service Area 40 Territories and Subsequent Annexation of Those Territories and Setting Protest Proceedings for the Proposal (File No. 2021-03)

RESOLVED, that the Local Agency Formation Commission of the County of Sonoma (“the Commission”) hereby finds and determines as follows:

1. Proposal and Procedural History

1.1 The Northern Sonoma County Fire Protection District (“the District,” “the Applicant”) filed a resolution of application (“the Application”) with the Executive Officer of the Commission (“the Executive Officer”) pursuant to the Cortese-Knox-Hertzberg Local Government Reorganization Act of 2000, Government Code section 56000 et seq. (“the Cortese-Knox-Hertzberg Act”), proposing a reorganization consisting of detachment of territories of County Service Area 40 – Fire Services and subsequent annexation of those territories (“the Proposal”). The territories that are the subject of the Proposal are generally located in the unincorporated areas of northern Sonoma County including the Geysers Area, the Fitch Mountain area, and the Sotoyome area (“the Affected Territories”). As part of the Application, the Applicant included a plan for providing services within the Affected Territory (“the Plan for Services”). The Application and the Plan for Services were submitted to the Executive Officer pursuant to the Cortese-Knox-Hertzberg Act. The Executive Officer accepted the Application for filing and issued a certificate of filing on June 27, 2022. Following issuance of the certificate of filing, the Executive Officer set the Proposal for consideration by the Commission and provided notice thereof as provided in the Cortese-Knox-Hertzberg Act.

1.2 The District, acting as lead agency for the purposes of the California Environmental Quality Act (“CEQA”) determined that the proposal was not a project subject to CEQA, pursuant to Section 15320 of the State CEQA Guidelines, and further, if the Proposal could be considered a project subject to CEQA, it is exempt under State CEQA Guidelines Section 15061(b)(3).

1.3 Based on the District's action, the Executive Officer determined that the Commission would comply with CEQA by acting as a responsible agency in its consideration of the Proposal.

1.4 The Executive Officer reviewed the Proposal and written comments received thereon and prepared a report analyzing the Proposal and recommending its approval ("the Executive Officer's Report"). Upon completion, the Executive Officer furnished copies of the Executive Officer's Report to all persons entitled to copies under the Cortese-Knox-Hertzberg Act.

1.5 The Commission considered the Executive Officer's Report and the Proposal at a noticed public hearing on September 7, 2022. At the hearing, the Commission heard and received all relevant oral and written testimony and evidence presented or filed and considered the Executive Officer's Report, the Proposal, and the CEQA determination. All interested persons were given the opportunity to hear and be heard.

1.6 At the conclusion of public testimony, the Commission discussed the Proposal and the environmental effects of the Proposal and voted to approve the Proposal, as set forth herein.

1.7 The Commission has reviewed and considered this resolution and hereby finds that it accurately sets forth the intentions of the Commission with respect to the Proposal.

2. CEQA Compliance

2.1 The Commission concurs with the District's and the Executive Officer's CEQA determinations for the Proposal and finds and determines that the Proposal is not a project subject to CEQA. If the Proposal could be considered a project, it is exempt from CEQA under State CEQA Guidelines Sections 15061(b)(3) and 15320. The facts and circumstances supporting the Commission's conclusions are set for the below:

2.2 The District will continue to provide fire and emergency medical services to the Affected Territories. No physical changes to the environment are anticipated, planned or reasonably foreseeable as a result of the Proposal.

2.3 State CEQA Guidelines Section 15061(b)(3) states that CEQA applies only to projects that have the potential for causing a significant effect on the environment. Where it can be seen with certainty that there is no possibility that the activity in question may have a significant effect on the environment, the activity is not subject to CEQA. As set forth above, the Proposal involves no change in existing use, and it can be seen with certainty that it will not have a significant effect on the environment. As a result, if the Proposal can be considered a project subject to CEQA, it is exempt pursuant to State CEQA Guidelines Section 15061(b)(3).

2.4 State CEQA Guidelines Section 15320 exempts from CEQA changes in the organization or reorganization of local government agencies where the changes do not change the geographical area in which previously existing powers are exercised. In that the District will provide fire and emergency medical services to the Affected Territories that are comparable or superior to those provided currently, and will continue to provide such services to the Affected Territories upon annexation, there is no change in the geographic area to which services have been provided. As a result, the Proposal is exempt pursuant to State CEQA Guidelines Section 15320.

2.6 The Commission has considered the potential environmental effects of the Proposal prior to reaching its decision on the Proposal. The Commission finds that, in doing so, it has fully discharged its responsibilities under CEQA for the Proposal.

3. Cortese-Knox-Hertzberg Act Compliance

3.1 The Commission makes the following findings and determinations with respect to the Proposal.

- a. The affected territories are within the Northern Sonoma County Fire Protection District's sphere of influence, making it eligible for annexation.
- b. The reason for the reorganization is to allow residents of the affected territories to directly receive the full range of services provided by the District.
- c. The Municipal Service Review conducted for West County Fire and Emergency Services Agencies, and the subsequent Sphere of Influence Study, reflects the District's ability to serve the affected territory.
- d. Existing property tax revenue and property tax transfers from the County of Sonoma will be sufficient to provide and maintain services for the Affected Territory.

3.2 The District has stated, and a Municipal Service Review conducted for the District found, that the District can adequately serve the Affected Territories.

3.3 The Affected Territories are inhabited, in that more than twelve registered voters reside within. Therefore, the Commission will establish a Protest proceeding beginning on September 12, 2022 and concluding at the Commission's regular meeting on November 2, 2022.

3.4 Based on the foregoing findings and determinations and the record of these proceedings, the Commission finds and determines that the Proposal is consistent with the intent of the Cortese-Knox-Hertzberg Act and the purposes of the Commission, as expressed in Government Code §56001 and §56301. The Commission further finds, therefore, that approval of the Proposal is appropriate.

NOW, THEREFORE, based on the foregoing findings and determinations and the record of these proceedings, and pursuant to the Cortese-Knox-Hertzberg Act, the Commission hereby declares and orders as follows:

1. The foregoing findings and determinations are true and correct, are supported by substantial evidence in the record, and are adopted as hereinabove set forth.

2. The Proposal is not a project subject to CEQA. If the Proposal could be considered a project subject to CEQA, it is exempt under Sections 15061(b)(3) and 15320 of the State CEQA Guidelines. The Executive Officer is directed to file a notice of exemption in accordance with CEQA and the State CEQA Guidelines.

3. The Proposal is approved.

4. The boundaries of the Affected Territory shall be as shown and described in Exhibit "A" to this resolution, attached hereto and incorporated herein by this reference.

5. The Proposal is assigned the following short-form designation: Northern Sonoma County FPD Reorg No. 2021-03 (CSA 40 Territories).

6. The regular county assessment roll shall be utilized for the Proposal.

7. The Affected Territories shall not be taxed for existing bonded indebtedness and contractual obligations.

8. The Executive Officer is authorized to file a notice of exemption in accordance with the provisions of CEQA and the State CEQA Guidelines. The Executive Officer is further authorized to mail copies of this resolution in the manner provided by law.

9. If a certificate of completion for the Proposal has not been filed within one year after the adoption of this resolution, the Proposal shall be deemed abandoned unless, prior to expiration of the one-year time period, the Commission authorizes an extension of time for completion of the Proposal.

10. The Clerk of the Commission is designated as the custodian of the documents and other materials that constitute the record of the proceedings upon which the Commission's decision herein is based. These documents may be found at the office of the Clerk of the Commission, 111 Santa Rosa Ave., Ste. 240, Santa Rosa, CA, 95404.

THE FOREGOING RESOLUTION was introduced at a regular meeting of the Commission on the 7th day of September 2022 and ordered adopted by the following vote:

COMMISSIONERS:

AYES:

NOES:

ABSENT:

WHEREUPON, the Chair declared the foregoing resolution adopted and

SO ORDERED.

Mark Bramfitt, Executive Officer

The within instrument is a true and correct copy of the original on file in this office.

ATTEST:

BY: _____
Clerk



Northern Sonoma County Fire – Cloverdale

451 S Cloverdale Blvd. • Cloverdale, CA 95425 • Phone: 707-894-3545 • Fax: 707-894-2014

Local Agency Formation Commission,

Subject: Support for Annexation Northern Sonoma County Fire

August 22, 2022

On behalf of the Cloverdale Fire Protection, I am submitting this letter, requesting support from the commission on the annexation application submitted by the Northern Sonoma County Fire Protection District. We are at the finish line, finally bringing the decades long collaborative effort to enhance services throughout the north county before you.

The fire districts have been working hard with city and county elected officials, community stakeholders and labor to strengthen and deliver a high-level fire, and emergency services system throughout Northern Sonoma County for many years. Benefits of annexation for residents include, enhanced staffing, both career and seasonal, continuation of a progressive vegetation management, and inspection program, all while improving firefighter safety.

Please support the progress of Northern Sonoma County Fire Protection District and the Cloverdale Fire Protection District efforts to achieve greater economy and efficiency in providing services for all the residents of the north county.

I want to thank the Sonoma County Board of Supervisors, and the LAFCO Commission for their work and support over the last few years, working together to achieve this opportunity.

Regards,

A handwritten signature in blue ink that reads "Carol Pigoni". The signature is fluid and cursive, with the first name "Carol" being more prominent than the last name "Pigoni".

Carol Pigoni

President Cloverdale Fire Protection District



August 25, 2022

Mr. Mark Bramfitt, Executive Officer
Sonoma County LAFCO
111 Santa Rosa Ave Suite 240
Santa Rosa CA 95404

Dear Mr. Bramfitt:

The Board of Trustees of the Fitch Mountain Association support the annexation of the Fitch Community by the Northern Sonoma County Fire Protection District. We understand that, after years of planning and negotiation, final approval of this important step in the vitally important consolidation of fire services in Sonoma County, is on your LAFCO agenda for the September 7, 2022 meeting.

Please count the Fitch Mountain Association as a supporter of this imperative and work expeditiously to grant final approval. Our Association and our affiliated Fitch Mountain COPE group already work closely with the NSCFPD on fire prevention and emergency preparedness in our extreme fire hazard zone. Approving this annexation will allow us to build upon that work.

Best Regards,

Heather Pilatic

Heather Pilatic, PhD
President, Fitch Mountain Association

cc: Supervisor James Gore, Sonoma County 4th District
Board of Directors, Northern Sonoma County Fire Protection District
Trustees, Fitch Mountain Association