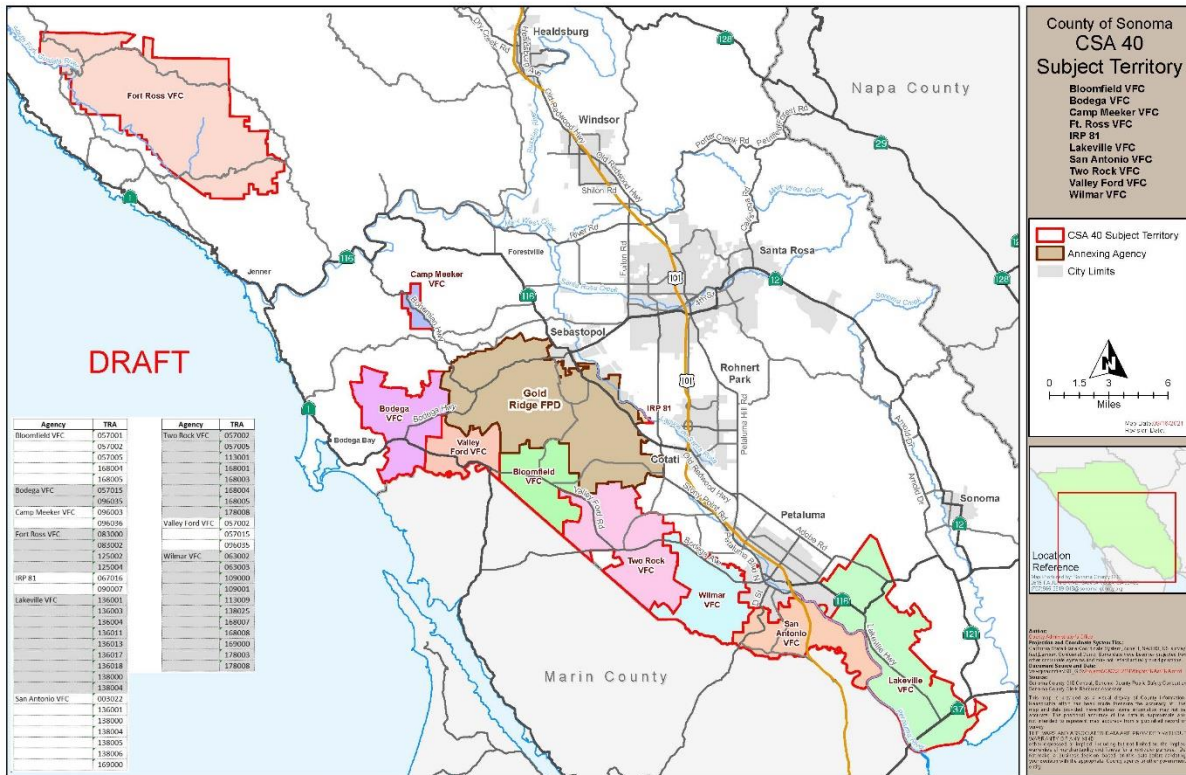


North Bay Fire Service Zones



Fort Ross

The Fort Ross area covers 54.54 square miles and consists of 179 parcels. Based on the 2010 census, 437 people reside in the area. The area is bordered by North Sonoma Coast Fire Protection District to the North, Timber Cove Fire Protection District to the West, Cazadero Fire Protection District to the East and Monte Rio Fire Protection District to the South.

Fire and Emergency Response: Fire protection and emergency response is provided by volunteer firefighters, stipend firefighters, mutual and auto aid response from neighboring agencies. Call types for this area include but are not limited to structural, vehicle and wildland fire response, emergency medical response, vehicle accidents, hazardous material incidents, hazardous conditions (down powerlines, trees across roadways, etc) and public assist calls. This area response to approximately 40-50 calls for service annually. Fort Ross experiences an increase in call volume during large bike races, atmospheric river events, and wind events. Fort Ross is especially vulnerable to the potential for large wildland fires.

Utilizing stipend firefighters when a predicted or planned event occurs has worked over the last several years in reducing response time and increasing preparedness. Upon consolidation greater capacity will be achieved to engage in fuels reduction work, community resilience projects, and overall fire prevention with the hiring of a Fire Prevention Captain and Division Chief of Fire Prevention.

Facilities: The Fort Ross response area is served by 4 stations due to the remoteness of the response area. None of these stations have sleeping quarters.

Station 1: Located at 24110 Fort Ross Rd. Built in 1987. Approximately 980 sq. ft. that houses one rescue vehicle and one Type-3 engine. This facility is privately owned has a current lease that expires in 2031 which is transferrable.

Station 2: Located at 20775 Fort Ross Rd. Built in 1980. Approximately 1200 sq. ft. that houses one Type-3 engine. This facility is privately owned and has a current lease that expires in 2083 which is transferrable.

Station 3: Located at 30908 Bohan Dillon Rd. Built in 1989. Approximately 700 sq. ft. that houses one rescue vehicle and one Type-3 engine. This facility is privately owned and has a current lease that renews every 3 years which is transferrable.

Station 4: Located 23125 Fort Ross Rd. Built in 1964. Approximately 2500 sq. ft. that houses one Type-6 engine and one water tender. This facility is privately owned and currently does not have an official lease which is transferrable.

Due to the remoteness of the response area all four stations will remain under their current leases. There will be a feasibility study in the future to determine the need for four stations and modifications made based upon the outcome of the study.

Apparatus: The Fort Ross response area has a variety of response vehicles. There are 3 utility vehicles, 1 Type-6 engine, 2 Type-3 engines, and 1 Water Tender. Funds will be allocated to replace the Water Tender and one Type-3 engine based upon the apparatus replacement plan.

Camp Meeker

The Camp Meeker area covers 1.95 square miles and consists of 686 parcels. Based on the 2010 census, 429 people reside in the area. The area is bordered by Monte Rio Fire Protection District to the North, and Occidental Fire District to the South, West, and East.

Fire and Emergency Response: Fire Protection and emergency response is provided by volunteer firefighters, stipend firefighters, mutual and auto aid response from neighboring agencies. Call types for this area include but are not limited to structural, vehicle and wildfire response, emergency medical response, vehicle accidents, hazardous material incidents, hazardous conditions (down powerlines, trees across roadways, etc) and public assist calls. This area responds to approximately 70-80 calls for service annually. Like Fort Ross a primary threat to the community is wildland fires and extreme weather events. Stipend staffing is very effective at ensuring the community is ready for these types of calls. We will continue to work with the Fire Safe Community to build resilience in the community. We have partnered with Fire Safe Sonoma and secured a grant for a chipper. With expanding capacity for fuel reduction work and public education we will be well equipped to meet the needs of Camp Meeker.

Facilities: The Camp Meeker response area is served by 1 station centrally located within the response area at 5240 Bohemian Hwy built in 1976 and is 1,500 square feet. This facility includes a kitchen facility, apparatus housing and an office area. There are no sleeping quarters. The facility is owned by the Parks and Recreation Department and has a current lease through 2039 which will be transferrable. Station remodel will be necessary in the future in order to house modern fire apparatus.

Apparatus: The Camp Meeker response area is serviced by 2 Type-1 engines, 1 Type-6 engine and 1 utility vehicle. The plan for apparatus is to remove one Type-1 engine from the fleet, replace one Type-1 engine through grant opportunity and replace the utility vehicle based upon the apparatus replacement plan.

Bodega

The Bodega area covers 15.85 square miles and consists of 166 parcels. Based on the 2010 census, 616 people reside in the area. The area is bordered by Sonoma County Fire District Station 10 to the North and West, Gold Ridge Fire Protection District to the East and North Bay Fire Station 86 (Valley Ford) to the South.

Fire and Emergency Response: Fire protection and emergency response is provided by volunteer firefighters, stipend firefighters, mutual and auto aid response from neighboring agencies. Call types for this area include but are not limited to structural, vehicle and wildfire response, emergency medical response, vehicle accidents, hazardous material incidents, hazardous conditions (down powerlines, trees across roadways, etc) and public assist calls. This area responds to approximately 130-140 calls for service annually. The Bodega station has a very dedicated volunteer core who consistently responds to calls for service. This area responds out of their traditional boundaries to Sonoma County Fire District Station 10 as well as Valley Ford.

Facilities: The Bodega area response area is served by 1 station centrally located within the response area located at 17240 Bodega Hwy built in 2013 and 4,568 square feet. The facility includes, a kitchen, training room, office area, workout area and apparatus storage. There are no sleeping quarters. The facility is owned by the Bodega Volunteer Fire non-profit. The non-profit also owns the local post office as well as a community hall which is used for fundraisers, training purposes and houses a utility vehicle. Negotiations are on-going for a lease of the facility. Improvements may be considered to create sleeping quarters in the future.

Apparatus: The Bodega response area is serviced by 1 Type-1 engine, 1 Type-3 engine, 1 Water Tender, 1 utility vehicle and 1 all-terrain vehicle. Due to the age of the apparatus, there are no anticipated apparatus purchases based upon the apparatus replacement plan.

Valley Ford

The Valley Ford area covers 8.13 square miles and consists of 86 parcels. Based on the 2010 census, 240 people reside in the area. The area is bordered by North Bay Fire Station 87 (Bodega) to the North, Marin County Fire (Tomales Station) to the West, Gold Ridge Fire District to the East and North Bay Fire Station 96 (Two Rock) to the South.

Fire and Emergency Response: Fire protection and emergency response is provided by volunteer firefighters, stipend firefighters, mutual and auto aid response from neighboring agencies. Call types for this area include but are not limited to structural, vehicle and wildfire response, emergency medical response, vehicle accidents, hazardous material incidents, hazardous conditions (down powerlines, trees across roadways, etc) and public assist calls. This area responds to approximately 20-30 calls for service annually. Valley Ford lacks local volunteers so response from this station is delayed. With improvements to the facility, we will utilize stipend staffing when weather events and tourism traffic increases.

Facilities: The Valley Ford response area is served by one station centrally located to the response area at 14445 Hwy 1 built in 2003 and is 3,450 square feet. The facility includes an office and apparatus storage area. Plans have been drawn and are in the planning stage for a remodel to add sleeping quarters, kitchen, training room and additional storage. The facility is owned by the Valley Ford Volunteer Fire Department, Inc a non-profit.

Apparatus: The Valley Ford response area is serviced by 1 Type-6 engine, 1 Water Tender and 1 utility vehicle. There are no apparatus purchases planned soon for the response area due to age and low miles on apparatus.

Two Rock

The Two Rock area covers 22.24 square miles and consists of 243 parcels. Based on 2010 census, 757 people reside in the area. The area is bordered by North Bay Fire Station 86 (Valley Ford) to the North, Marin County Fire and Coast Guard Training Center Fire to the West, Gold Ridge Fire Protection District and Rancho Adobe Fire District to the East and North Bay Fire Station 94 (Wilmar) to the South.

Fire and Emergency Response: Fire protection and emergency response is provided by volunteer firefighters, stipend firefighters, mutual and auto aid response from neighboring agencies. Call types for this area include but are not limited to structural, vehicle and wildfire response, emergency medical response, vehicle accidents, hazardous material incidents, hazardous conditions (down powerlines, trees across roadways, etc) and public assist calls. This area responds to approximately 110-120 calls for service annually.

Facilities: The Two Rock response area is served by one apparatus storage facility built in 2020 and is 5,400 square feet located at 7599 Valley Ford Rd in the southern portion of the response area along with a community hall located across the street which has a training room, kitchen

and apparatus storage area. These facilities are owned by the Two Rock Fire Department, Inc, a non-profit.

Apparatus: The Two Rock response area is serviced by 1 Type-3 engine, 1 Type-6 engine, 1 Water Tender, 1 Reserve Type-1 engine and 1 utility vehicle. There are no immediate plans to replace/upgrade apparatus based up on age due to the apparatus replacement plan.

Wilmar

The Wilmar area covers 14.62 square miles and consists of 1,064 parcels. Based on 2010 census, 3,470 people reside in the area. The area is bordered by North Bay Fire Station 96 (Two Rock) to the North, Marin County Fire (Hicks Valley Station) to the West, Rancho Adobe Fire District to the East and Petaluma Fire Department and Novato Fire Protection District to the South.

Fire and Emergency Response: Fire protection and emergency response is provided by 1 (40 hour) firefighter and 1 seasonal firefighter on contract through Gold Ridge Fire District, volunteer firefighters, stipend firefighters, mutual and auto aid response from neighboring agencies. Call types for this area include but are not limited to structural, vehicle and wildfire response, emergency medical response, vehicle accidents, hazardous material incidents, hazardous conditions (down powerlines, trees across roadways, etc) and public assist calls. This area responds to approximately 400-440 calls for service annually. The Wilmar station will be staffed on a 24hr basis with a minimum of two paid personnel augmented by volunteer and stipend staff.

Facilities: The Wilmar area is served by one centrally located station at 3825 Bodega Ave. It was built in 1973 and is 5,760 square feet. The facility includes a training room, kitchen, sleeping quarters for two personnel, office area and apparatus storage. A minor remodel is planned to add additional sleeping quarters. The building is owned by Wilmar Fire, Inc, a non-profit. The land is owned by Wilson School District and a transferrable 10-year lease is being negotiated.

Apparatus: The Wilmar response area is serviced by 1 Type-1 engine, 1 Type-3 engine, 1 Type-6 engine, 1 Water Tender, 1 Medium Rescue and 3 utility vehicles. There are no immediate plans to replace/upgrade apparatus based up on age due to the apparatus replacement plan.

Lakeville

The Lakeville area covers 34.13 square miles which includes maritime response for the Petaluma River into San Pablo Bay. There are 266 parcels in the area and per the 2010 census, there are 437 people that reside in the area. The area is bordered by Petaluma Fire Department to the North, North Bay Fire Station 94 (Wilmar) to the West, Schell Vista Fire Protection District to the East and Novato Fire Protection District to the South.

Fire and Emergency Response: Fire protection and emergency response is provided by 1 (40 hour) firefighter on contract through Gold Ridge Fire District, volunteer firefighters, stipend firefighters, mutual and auto aid response from neighboring agencies. Call types for this area include but are not limited to structural, vehicle and wildfire response, emergency medical response, vehicle accidents, hazardous material incidents, maritime response, hazardous conditions (down powerlines, trees across roadways, etc) and public assist calls. This area responds to approximately 190-210 calls for service annually.

Facilities: The Lakeville area is served by one station located at 5090 Lakeville Hwy. The facility was built in 2015 and is 2958 square feet. The facility includes offices, training room, sleeping quarters, apparatus storage. The property is privately owned and is under a current transferrable lease through 2030. Future plans would include additional garage space to house water rescue/maritime assets.

Apparatus: The Lakeville response area is serviced by 1 Type-1 engine, 1 Type-3 engine, 3 utility vehicles, one large maritime vessel and two smaller water rescue vessels. There are no immediate plans to replace/upgrade apparatus due to age based upon the apparatus replacement plan. Future grant opportunities may be used to replace some of the maritime response equipment.

2022 NBF Response Times (Dispatch to At Scene)	
Bodega	8:15
Camp Meeker	7:38
Fort Ross	14:20
Lakeville	8:49
Two Rock	8:26
Valley Ford	10:19
Wilmar	6:36
NBF Total Average	9:11

2022 NBF Responding Times (Dispatch to Responding)	
Bodega	3:04
Camp Meeker	5:20
Fort Ross	3:40
Lakeville	2:29
Two Rock	2:48
Valley Ford	3:11
Wilmar	1:55
NBF Total Average	3:12