

County of Sonoma CSA 40 Subject Territory

- Bloomfield VFC
- Bodega VFC
- Camp Meeker VFC
- Ft. Ross VFC
- IRP 81
- Lakeville VFC
- San Antonio VFC
- Two Rock VFC
- Valley Ford VFC
- Wilmar VFC

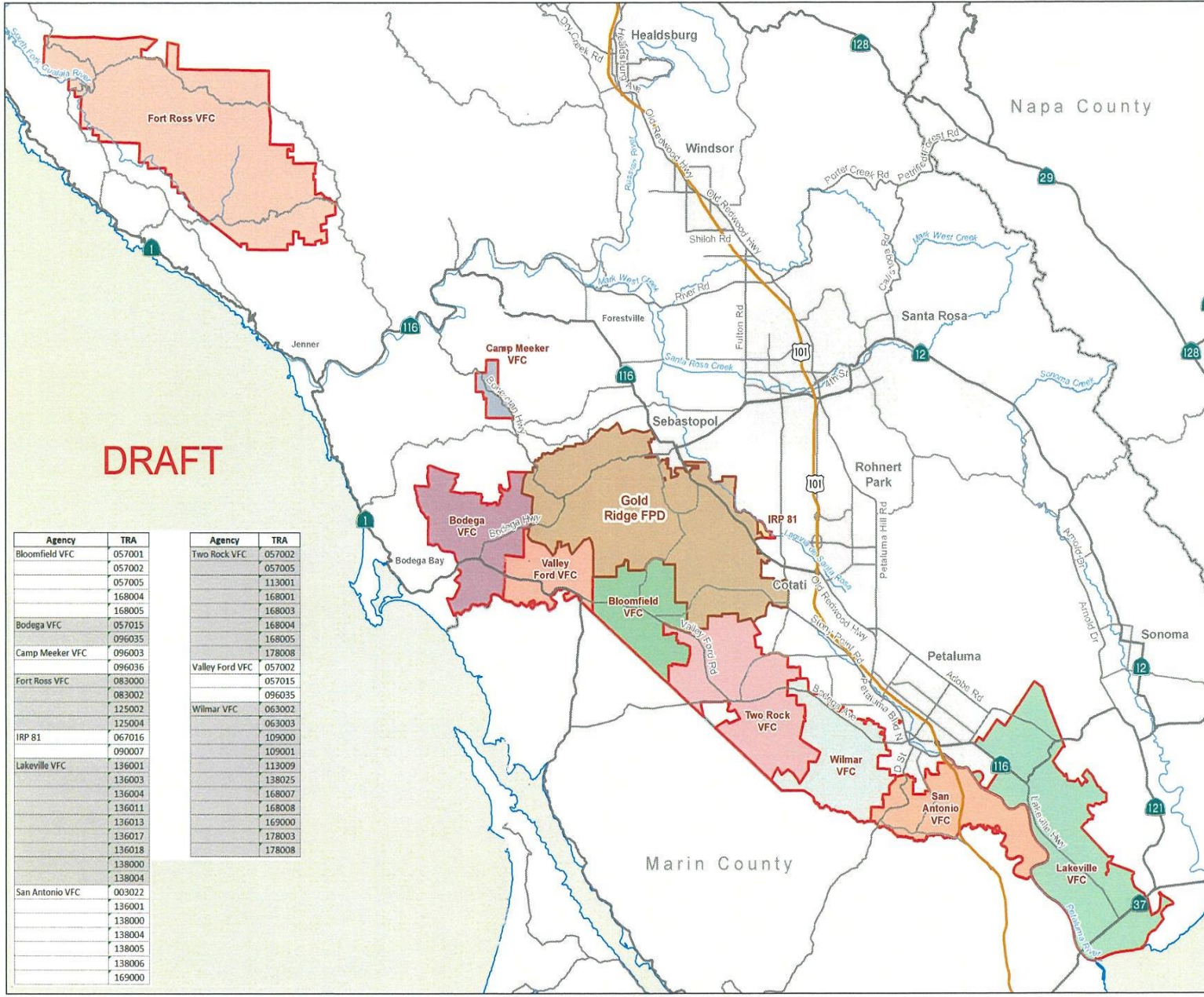
- CSA 40 Subject Territory
- Annexing Agency
- City Limits



Map Date: 09/16/2021
Revision Date:



Author:
County Administrator's Office
Projection and Coordinate System:
California State Plane Coordinate System, Zone 10, NAD 83, US survey feet/Lambert Conformal Conic. Some data have been re-projected from other coordinate systems and may not reflect actual ground positions.
Document Source and Date:
s:\wg\gsd\file\SD_DISE\Projects\CAO\2021\11\Weight\TRA\TRA.mxd
Source:
Sonoma County GIS Central, Sonoma County Public Safety Consortium, Sonoma County Clerk Recorder Assessor
This map is provided as a visual display of County information. Reasonable effort has been made to ensure the accuracy of the map and data provided; nevertheless, some information may not be accurate. The positional accuracy of the data is approximate and not intended to represent more accuracy than a published record of survey.
THE MAPS AND ASSOCIATED DATA ARE PROVIDED WITHOUT WARRANTY OF ANY KIND, either expressed or implied, including but not limited to the implied warranties of merchantability and fitness for a particular purpose. Do not make a business decision based on this data before validating your decision with the appropriate County agency or other government entity.



DRAFT

Agency	TRA
Bloomfield VFC	057001
	057002
	057005
	168004
	168005
Bodega VFC	057015
	096035
Camp Meeker VFC	096003
	096036
Fort Ross VFC	083000
	083002
	125002
	125004
IRP 81	067016
	090007
Lakeville VFC	136001
	136003
	136004
	136011
	136013
	136017
	136018
	138000
	138004
San Antonio VFC	003022
	136001
	138000
	138004
	138005
	138006
	169000

Agency	TRA
Two Rock VFC	057002
	057005
	113001
	168001
	168003
	168004
	168004
	168005
	168005
	178008
Valley Ford VFC	057002
	057015
	096035
Wilmar VFC	063002
	063003
	109000
	109001
	113009
	138025
	168007
	168008
	169000
	178003
	178008