

**MUNICIPAL SERVICE REVIEW FOR  
WEST COUNTY  
FIRE AND EMERGENCY SERVICE AGENCIES**

**Appendix 2**

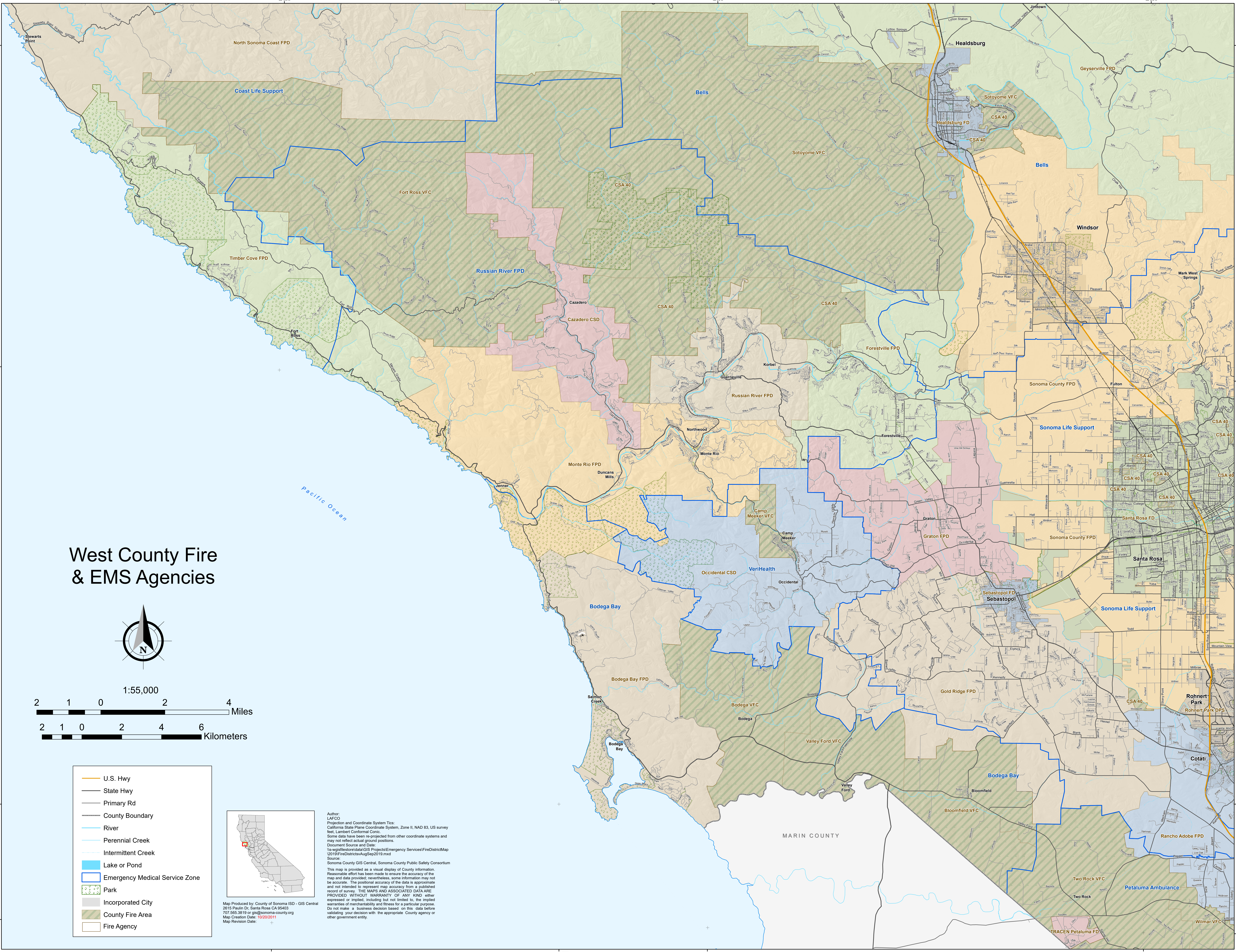
**Study Area Map**

**Fire District Maps**

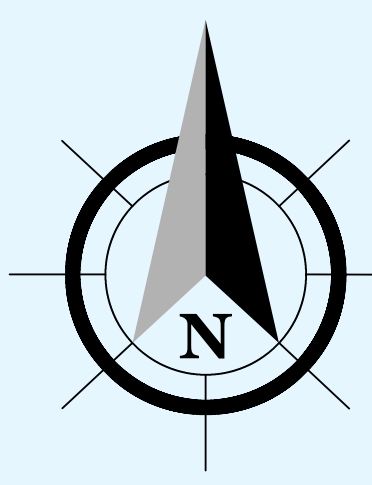
**Community Service District Maps**

**City of Sebastopol Map**

County Service Area 40 Agencies (Volunteer Fire Companies) are not mapped separately; refer to Study Area Map



# West County Fire & EMS Agencies



1:55,000

2 1 0 2 4 Miles

2 1 0 2 4 6 Kilometers

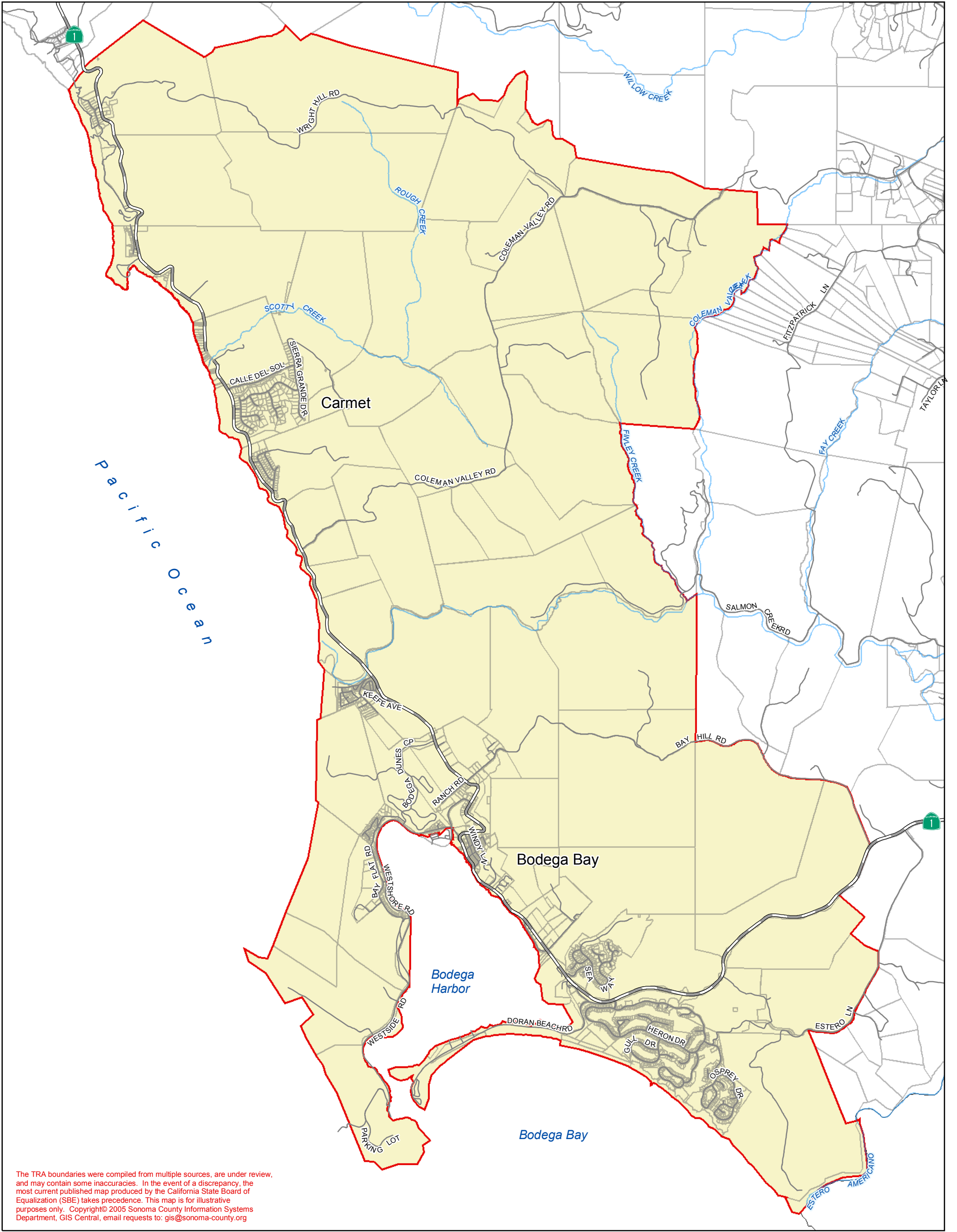
- U.S. Hwy
- State Hwy
- Primary Rd
- County Boundary
- River
- Perennial Creek
- Intermittent Creek
- Lake or Pond
- Emergency Medical Service Zone
- Park
- Incorporated City
- County Fire Area
- Fire Agency



Map Produced by: County of Sonoma ISD - GIS Central  
 2015 Paulin Dr. Santa Rosa, CA 95403  
 707.565.3819 or gis@sonoma-county.org  
 Map Creation Date: 10/20/2011  
 Map Revision Date: 11

Author: LAFCO  
 Projection and Coordinate System Tics: California State Plane Coordinate System, Zone II, NAD 83, US survey feet, Lambert Conformal Conic.  
 Some data have been re-projected from other coordinate systems and may not reflect actual ground positions.  
 Document Source and Date: \\s-wp1\gis\sonoma\GIS\Project\Emergency Services\FireDistrictMap\2019\FireDistrictsAugSep2019.mxd  
 Source: Sonoma County GIS Central, Sonoma County Public Safety Consortium  
 This map is provided as a visual display of County information. Reasonable effort has been made to ensure the accuracy of the map and data provided; nevertheless, some information may not be accurate. The positional accuracy of the data is approximate and not intended to represent map accuracy from a published record of survey. THE MAPS AND ASSOCIATED DATA ARE PROVIDED WITHOUT WARRANTY OF ANY KIND either expressed or implied, including but not limited to, the implied warranties of merchantability and fitness for a particular purpose. Do not make a business decision based on this data before validating your decision with the appropriate County agency or other government entity.

# Bodega Bay Fire Protection District

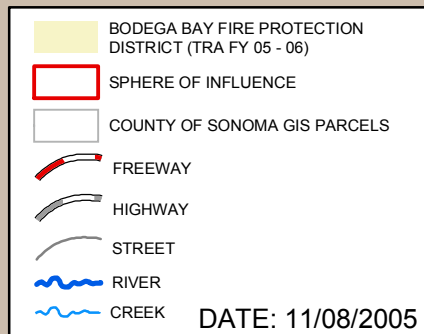


The TRA boundaries were compiled from multiple sources, are under review, and may contain some inaccuracies. In the event of a discrepancy, the most current published map produced by the California State Board of Equalization (SBE) takes precedence. This map is for illustrative purposes only. Copyright © 2005 Sonoma County Information Systems Department, GIS Central, email requests to: [gis@sonoma-county.org](mailto:gis@sonoma-county.org)



0 0.5 1 Miles

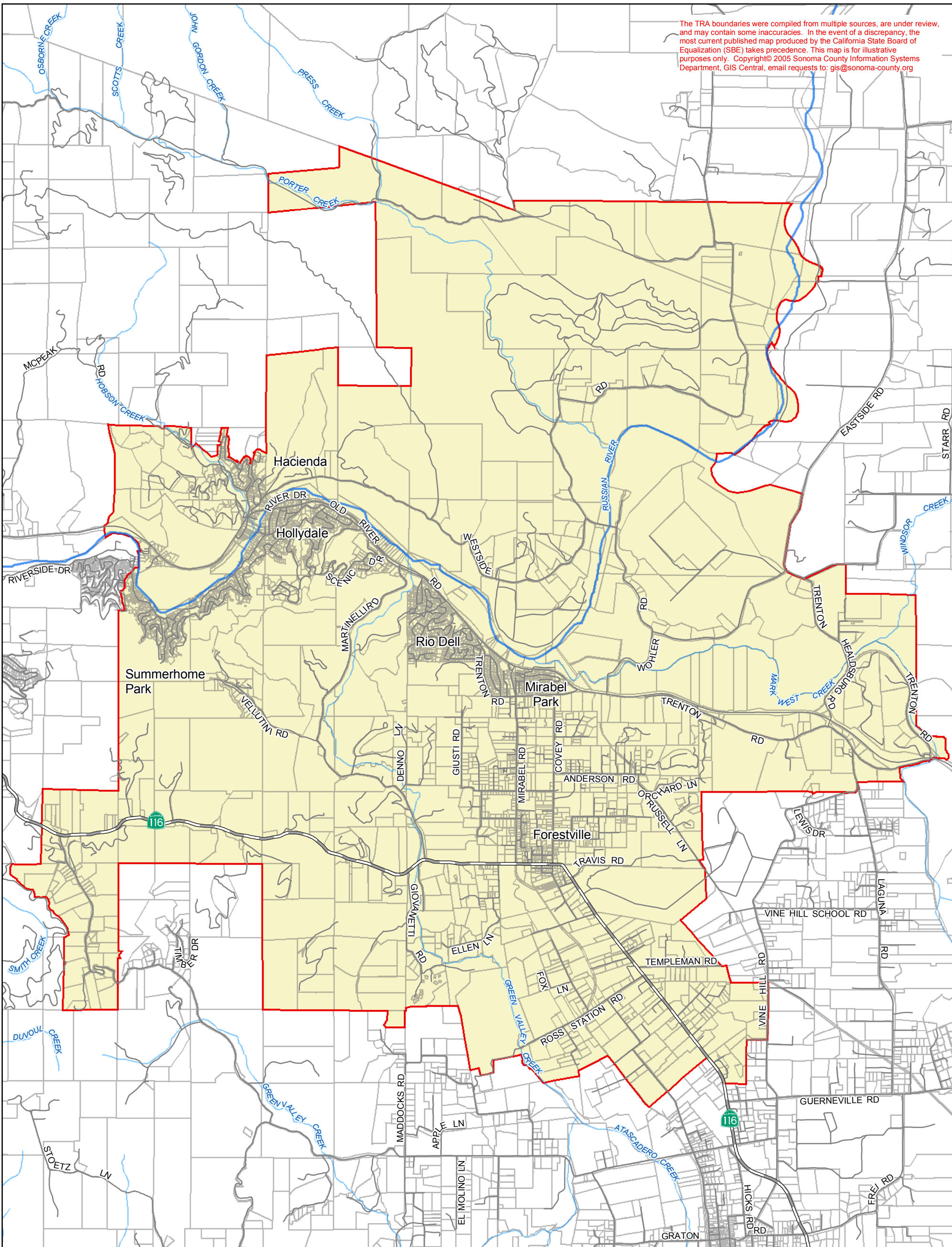
## BODEGA BAY FIRE PROTECTION DISTRICT



- Author: County of Sonoma Information Systems Department GIS Central
- Projection & Coordinate System Tics: California State Plane Coordinate System, Zone II, NAD 83, US survey feet, Lambert Conformal Conic. Some data have been reprojected from other coordinate systems and may not reflect actual ground positions.
- Document Source and Date: sc-gisdb2\gisdata2\projects\LAFCO\Special District\Fire\BodegaBayFPD\_v9.mxd
- Data Source: Sonoma County Information Systems Department GIS Central, SBE, Sonoma County Assessor

# Forestville Fire Protection District

C O U N T Y O F S O N O M A



The TRA boundaries were compiled from multiple sources, are under review, and may contain some inaccuracies. In the event of a discrepancy, the most current published map produced by the California State Board of Equalization (SBE) takes precedence. This map is for illustrative purposes only. Copyright © 2005 Sonoma County Information Systems Department, GIS Central, email requests to: [gis@sonoma-county.org](mailto:gis@sonoma-county.org)

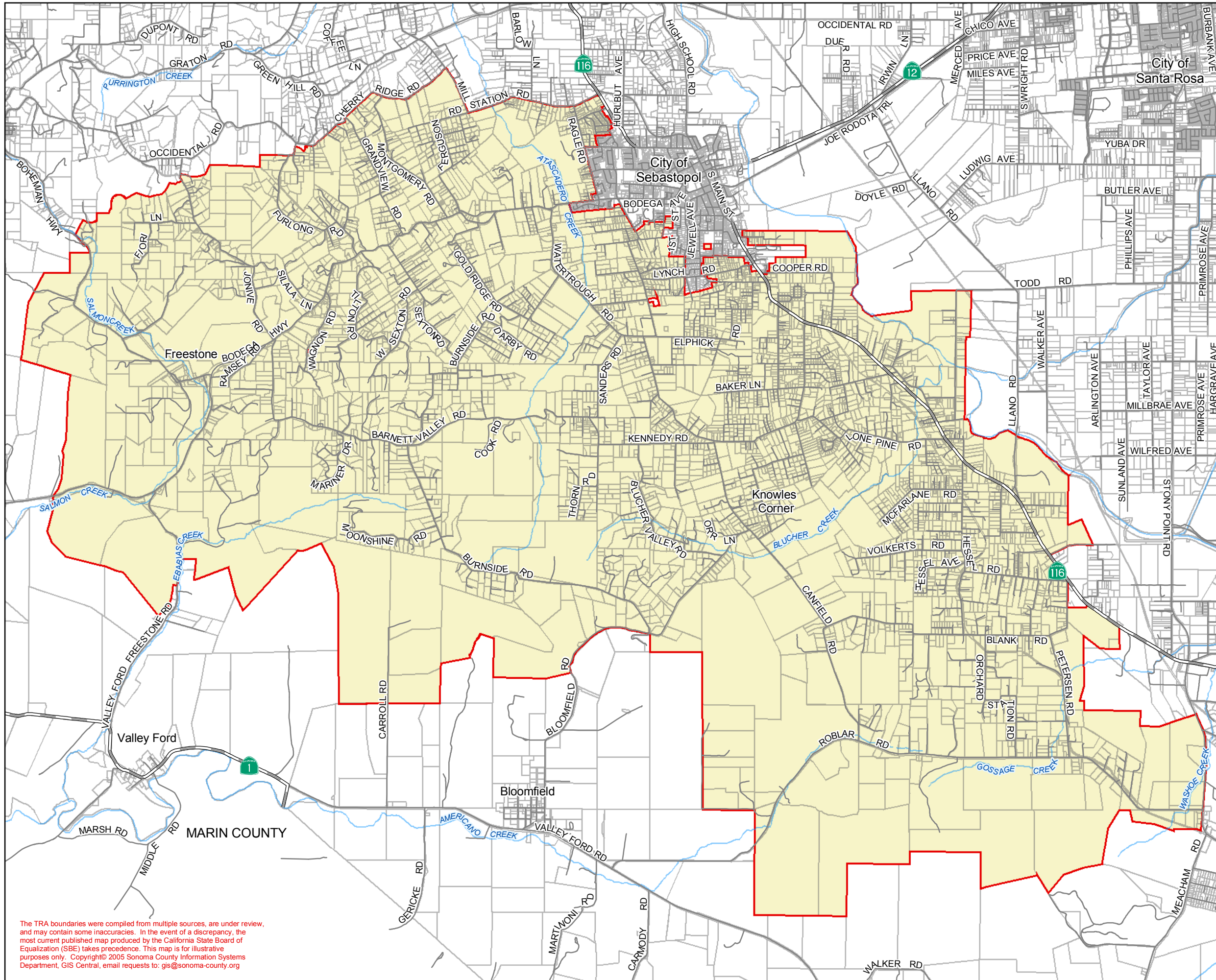
**FORESTVILLE FIRE PROTECTION DISTRICT**

	FORESTVILLE FIRE PROTECTION DISTRICT (TRA FY 05 - 06)
	SPHERE OF INFLUENCE
	COUNTY OF SONOMA GIS PARCELS
	FREEWAY
	HIGHWAY
	STREET
	RIVER
	CREEK

DATE: 11/08/2005

**LOCATION REFERENCE**

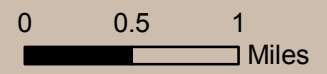
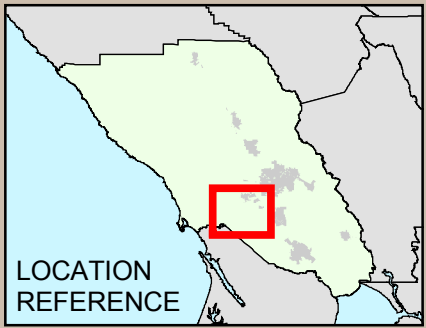
- Author: County of Sonoma Information Systems Department GIS Central
- Projection & Coordinate System Tics: California State Plane Coordinate System, Zone II, NAD 83, US survey feet, Lambert Conformal Conic. Some data have been reprojected from other coordinate systems and may not reflect actual ground positions.
- Document Source and Date: sc-gisdb2\gisdata2\projects\LAFCO\Special District\Fire\ForestvilleFPD\_v9.mxd
- Data Source: Sonoma County Information Systems Department GIS Central, SBE, Sonoma County Assessor



# GOLD RIDGE FIRE PROTECTION DISTRICT

GOLD RIDGE FIRE PROTECTION DISTRICT (TRA FY 05 - 06)  
 SPHERE OF INFLUENCE  
 COUNTY OF SONOMA GIS PARCELS  
 FREEWAY  
 HIGHWAY  
 STREET  
 RIVER  
 CREEK

DATE: 11/08/2005

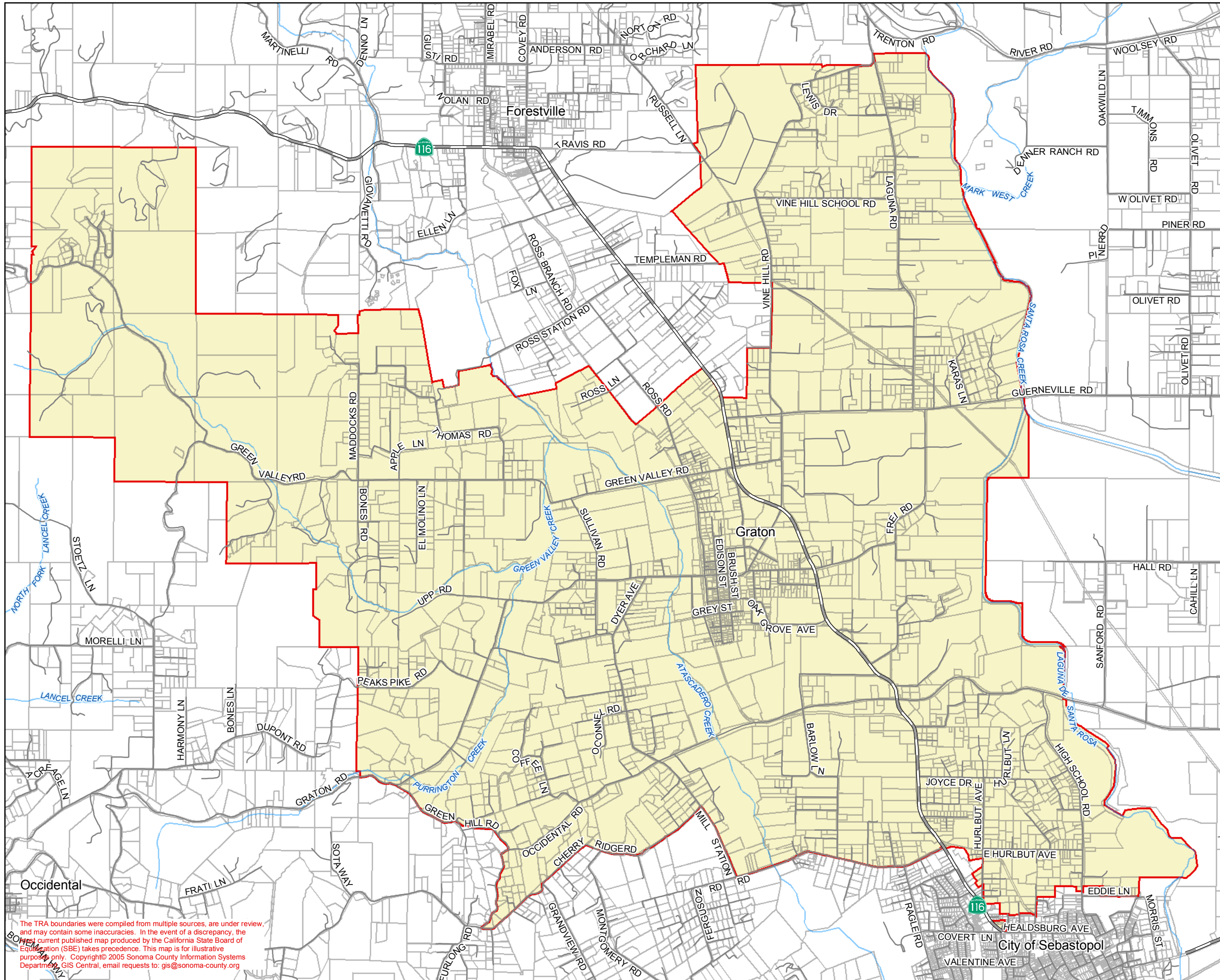


- Author: County of Sonoma Information Systems Department GIS Central
- Projection & Coordinate System Tics: California State Plane Coordinate System, Zone II, NAD 83, US survey feet, Lambert Conformal Conic. Some data have been reprojected from other coordinate systems and may not reflect actual ground positions.
- Document Source and Date: sc-gisdb2\gisdata2\projects\LAFCO\Special District\Fire\GoldRidgeFPD\_v9.mxd.
- Data Source: Sonoma County Information Systems Department GIS Central, SBE, Sonoma County Assessor

The TRA boundaries were compiled from multiple sources, are under review, and may contain some inaccuracies. In the event of a discrepancy, the most current published map produced by the California State Board of Equalization (SBE) takes precedence. This map is for illustrative purposes only. Copyright © 2005 Sonoma County Information Systems Department, GIS Central, email requests to: gis@sonoma-county.org

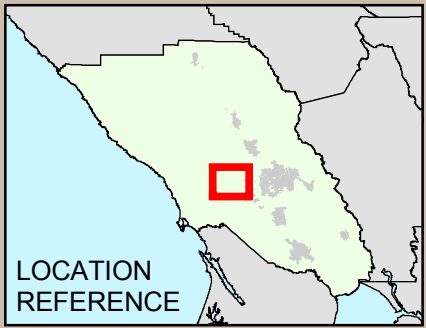


C O U N T Y O F S O N O M A



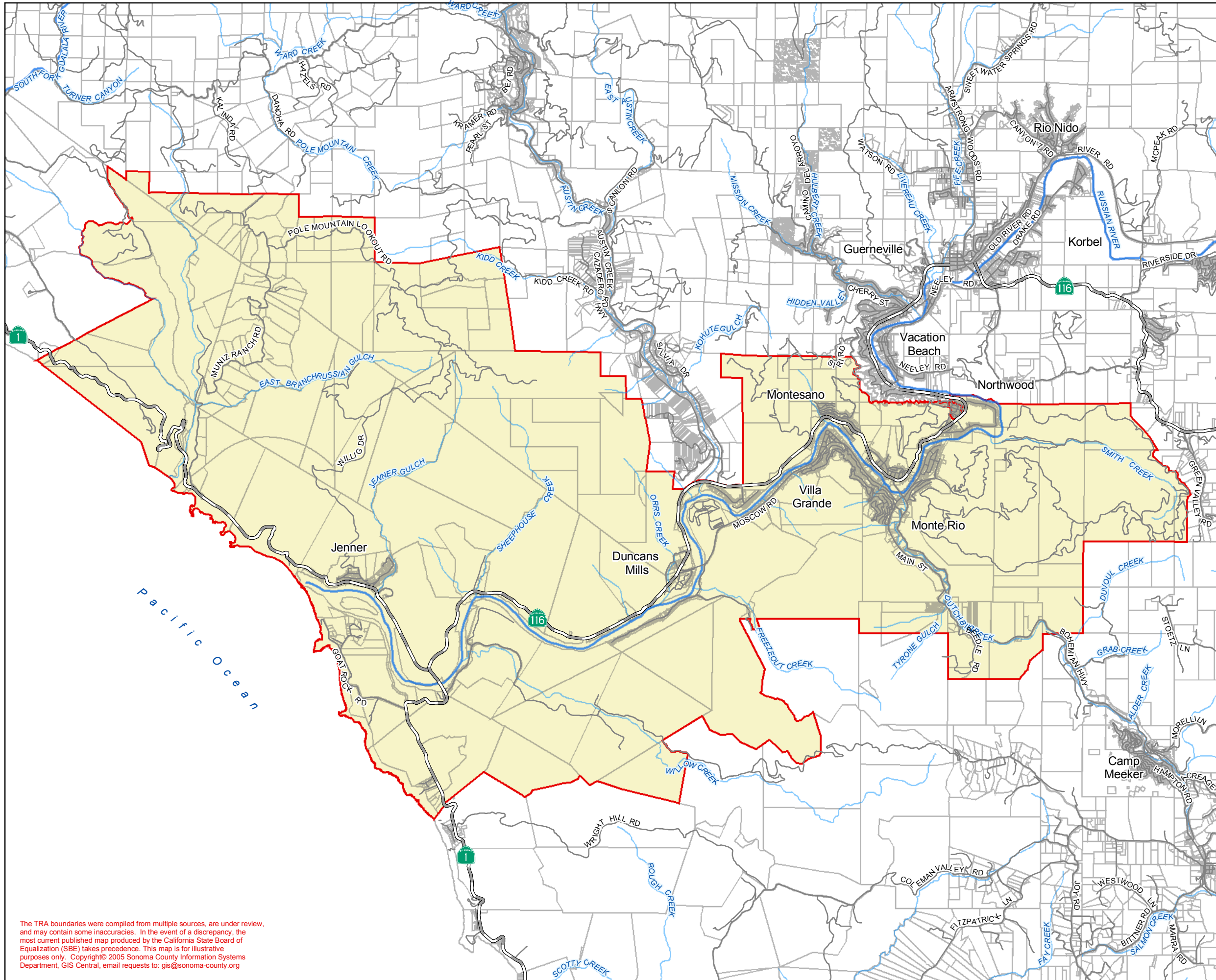
# GRATON FIRE PROTECTION DISTRICT

- GRATON FIRE PROTECTION DISTRICT (TRA FY 05 - 06)
  - SPHERE OF INFLUENCE
  - COUNTY OF SONOMA GIS PARCELS
  - FREEWAY
  - HIGHWAY
  - STREET
  - RIVER
  - CREEK
- DATE: 11/08/2005



- Author: County of Sonoma Information Systems Department GIS Central
- Projection & Coordinate System Tics: California State Plane Coordinate System, Zone II, NAD 83, US survey feet, Lambert Conformal Conic. Some data have been reprojected from other coordinate systems and may not reflect actual ground positions.
- Document Source and Date: sc-gisdb2\gisdata2\projects\LAFCO\Special District\Fire\GratonFPD\_v9.mxd
- Data Source: Sonoma County Information Systems Department GIS Central, SBE, Sonoma County Assessor

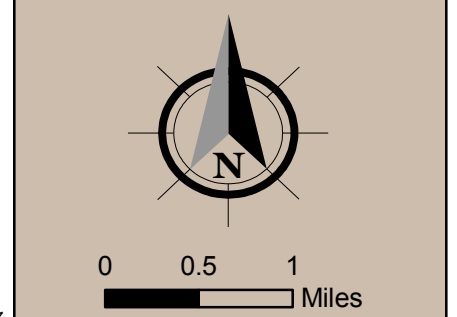
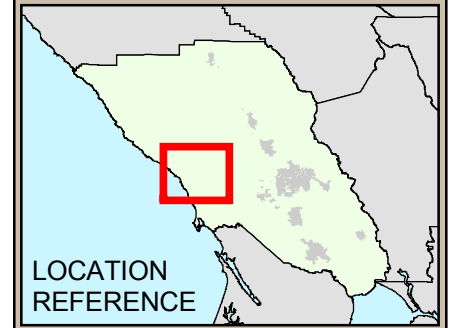
The TRA boundaries were compiled from multiple sources, are under review, and may contain some inaccuracies. In the event of a discrepancy, the current published map produced by the California State Board of Equalization (SBE) takes precedence. This map is for illustrative purposes only. Copyright © 2005 Sonoma County Information Systems Department, GIS Central, email requests to: gis@sonoma-county.org



# MONTE RIO FIRE PROTECTION DISTRICT

- MONTE RIO FIRE PROTECTION DISTRICT (TRA FY 05 - 06)
- SPHERE OF INFLUENCE
- COUNTY OF SONOMA GIS PARCELS
- FREEWAY
- HIGHWAY
- STREET
- RIVER
- CREEK

DATE: 11/07/2005



- Author: County of Sonoma Information Systems Department GIS Central
- Projection & Coordinate System Tics: California State Plane Coordinate System, Zone II, NAD 83, US survey feet, Lambert Conformal Conic. Some data have been reprojected from other coordinate systems and may not reflect actual ground positions.
- Document Source and Date: sc-gisdb2\gisdata2\projects\LAFCO\Special District\Fire\MonteRioFPD\_v9.mxd.
- Data Source: Sonoma County Information Systems Department GIS Central, SBE, Sonoma County Assessor

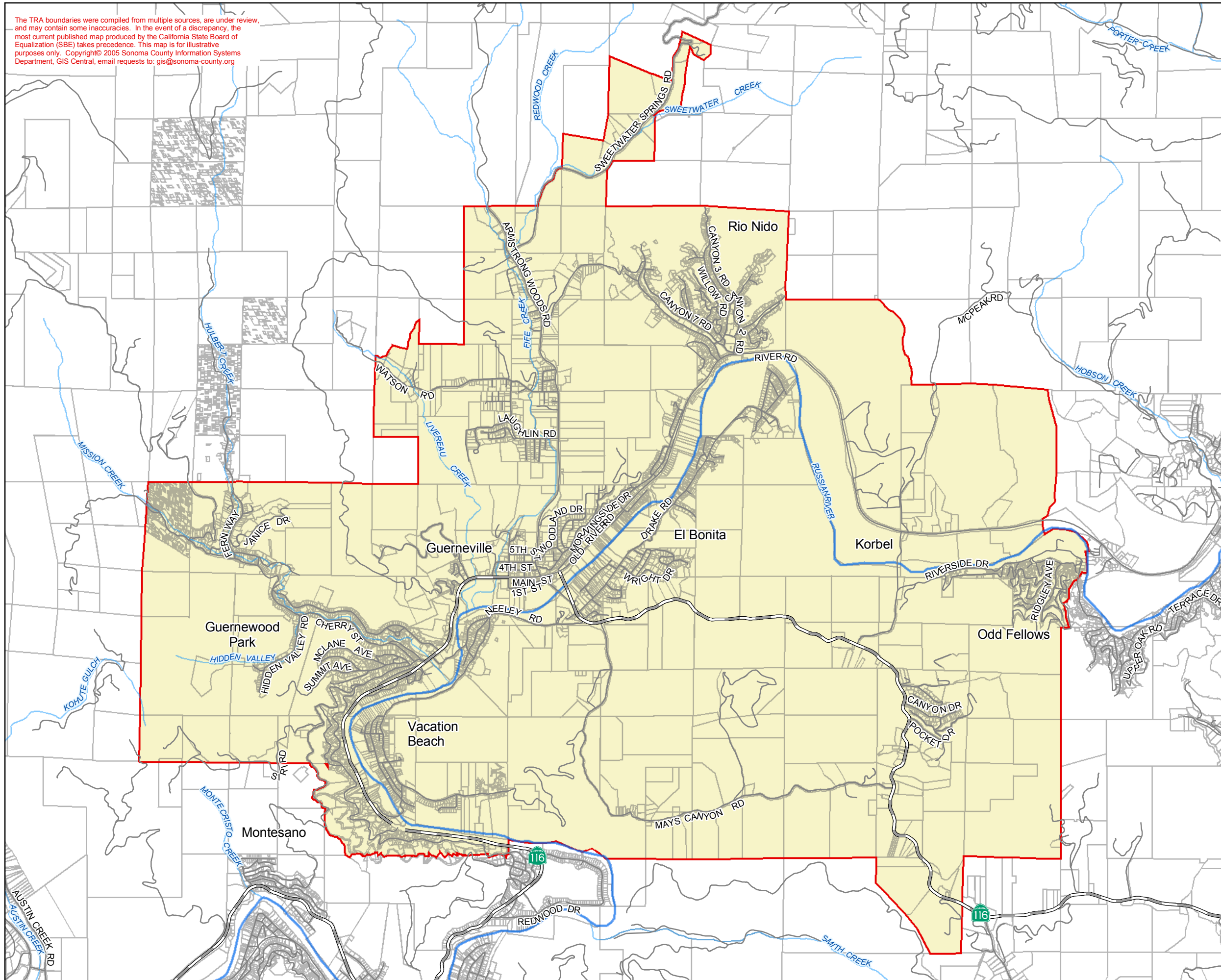
The TRA boundaries were compiled from multiple sources, are under review, and may contain some inaccuracies. In the event of a discrepancy, the most current published map produced by the California State Board of Equalization (SBE) takes precedence. This map is for illustrative purposes only. Copyright © 2005 Sonoma County Information Systems Department, GIS Central, email requests to: [gis@sonoma-county.org](mailto:gis@sonoma-county.org)



C O U N T Y O F S O N O M A



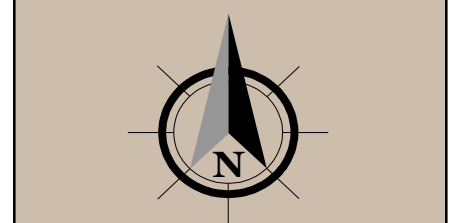
The TRA boundaries were compiled from multiple sources, are under review, and may contain some inaccuracies. In the event of a discrepancy, the most current published map produced by the California State Board of Equalization (SBE) takes precedence. This map is for illustrative purposes only. Copyright © 2005 Sonoma County Information Systems Department, GIS Central, email requests to: gis@sonoma-county.org



# RUSSIAN RIVER FIRE PROTECTION DISTRICT

- RUSSIAN RIVER FIRE PROTECTION DISTRICT (TRA FY 05 - 06)
- SPHERE OF INFLUENCE
- COUNTY OF SONOMA GIS PARCELS
- FREEWAY
- HIGHWAY
- STREET
- RIVER
- CREEK

DATE: 11/09/2005

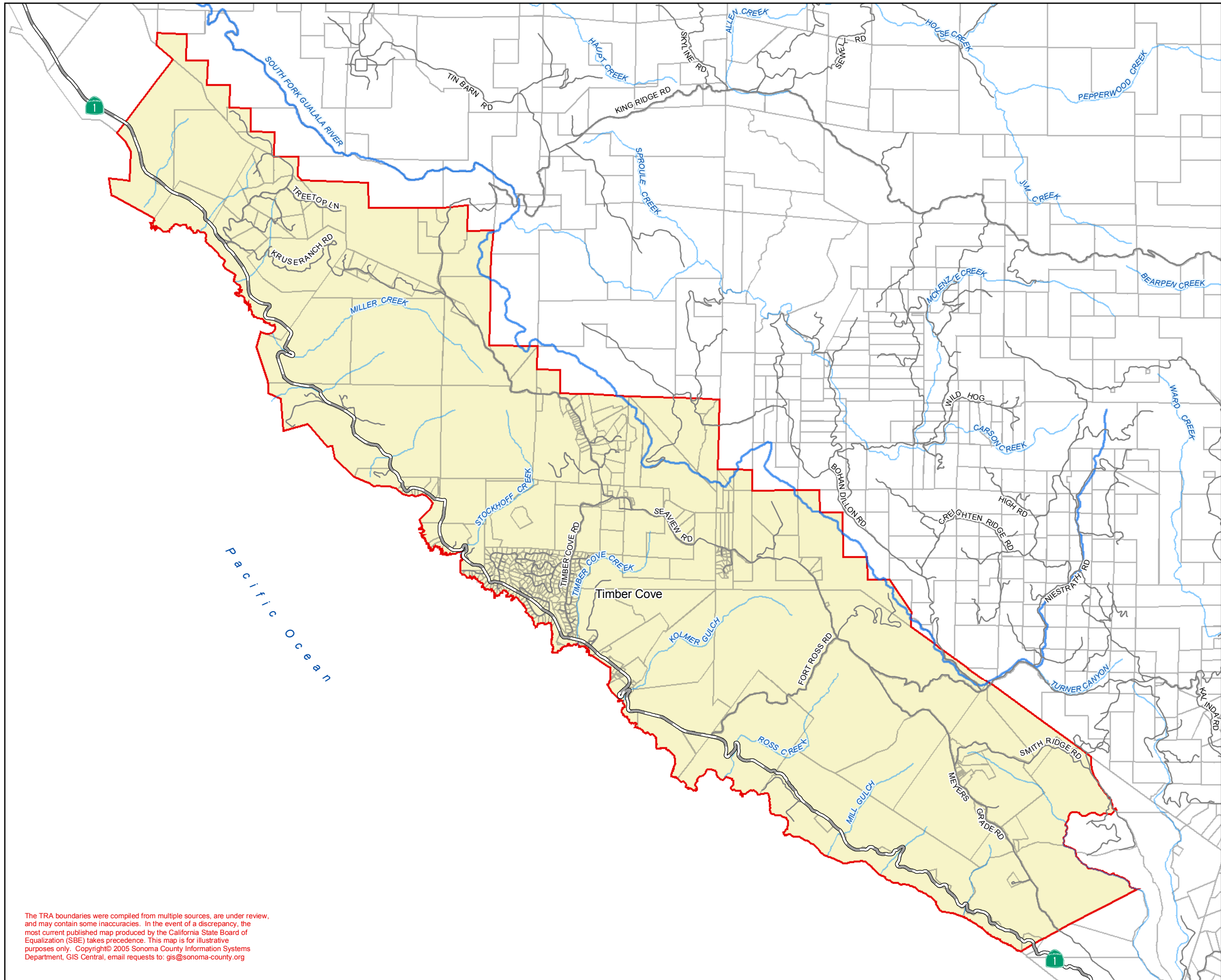


- Author: County of Sonoma Information Systems Department GIS Central
- Projection & Coordinate System Tics: California State Plane Coordinate System, Zone II, NAD 83, US survey feet, Lambert Conformal Conic. Some data have been reprojected from other coordinate systems and may not reflect actual ground positions.
- Document Source and Date: sc-gisdb2\gisdata2\projects\LAFCO\Special District\Fire\RussianRiverFPD\_v9.mxd
- Data Source: Sonoma County Information Systems Department GIS Central, SBE, Sonoma County Assessor



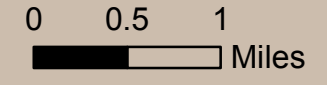
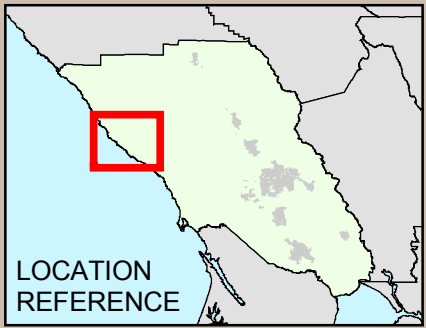


C  
O  
U  
N  
T  
Y  
O  
F  
S  
O  
N  
O  
M  
A



# TIMBER COVE FIRE PROTECTION DISTRICT

- TIMBER COVE FIRE PROTECTION DISTRICT (TRA FY 05 - 06)
  - SPHERE OF INFLUENCE
  - COUNTY OF SONOMA GIS PARCELS
  - FREEWAY
  - HIGHWAY
  - STREET
  - RIVER
  - CREEK
- DATE: 11/07/2005

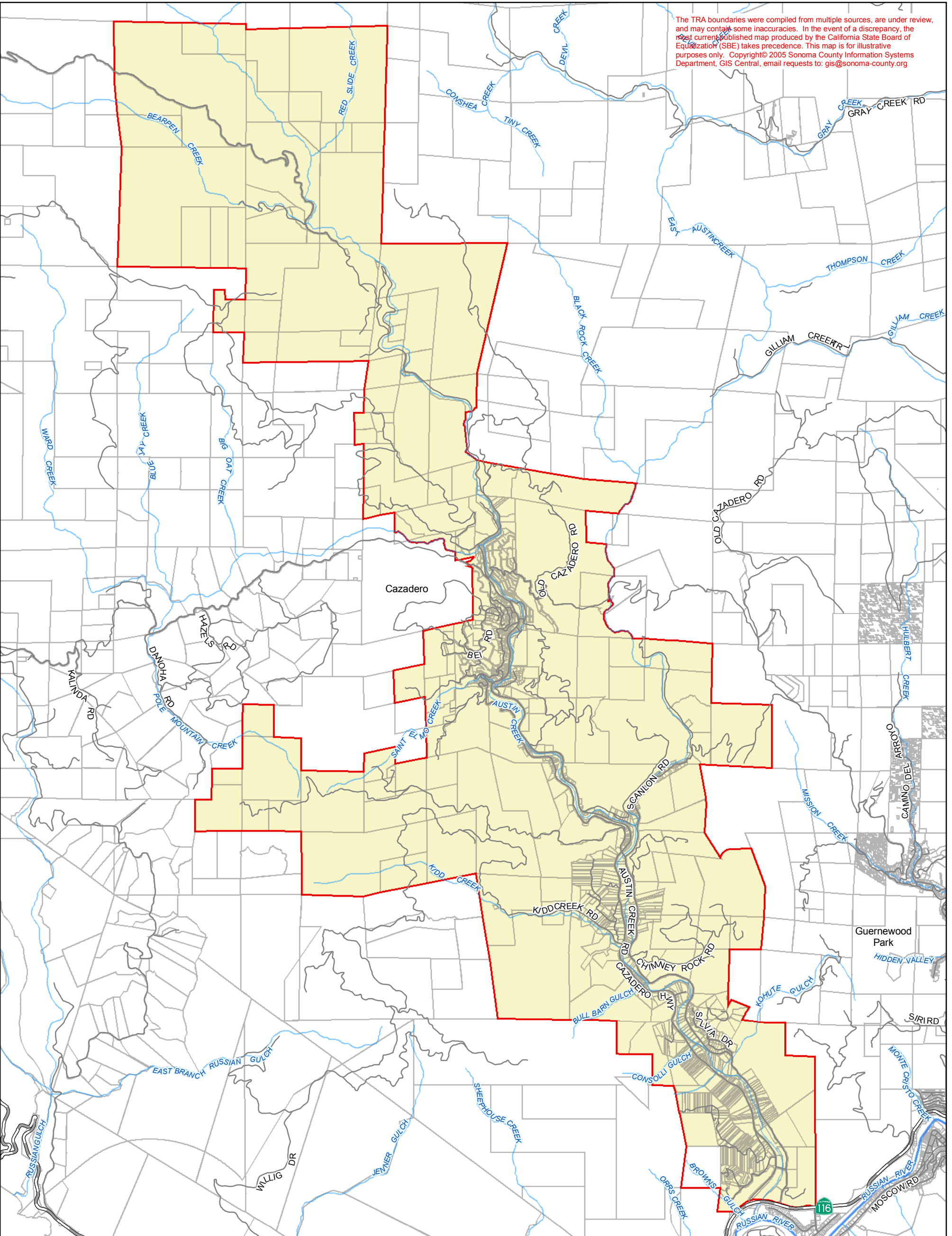


- Author: County of Sonoma Information Systems Department GIS Central
- Projection & Coordinate System Tics: California State Plane Coordinate System, Zone II, NAD 83, US survey feet, Lambert Conformal Conic. Some data have been reprojected from other coordinate systems and may not reflect actual ground positions.
- Document Source and Date: sc-gisdb2\gisdata2\projects\LAFCO\Special District\Fire\TimberCoveFPD\_v9.mxd.
- Data Source: Sonoma County Information Systems Department GIS Central, SBE, Sonoma County Assessor

The TRA boundaries were compiled from multiple sources, are under review, and may contain some inaccuracies. In the event of a discrepancy, the most current published map produced by the California State Board of Equalization (SBE) takes precedence. This map is for illustrative purposes only. Copyright © 2005 Sonoma County Information Systems Department, GIS Central, email requests to: [gis@sonoma-county.org](mailto:gis@sonoma-county.org)

# Cazadero Community Service District

C O U N T Y O F S O N O M A



The TRA boundaries were compiled from multiple sources, are under review, and may contain some inaccuracies. In the event of a discrepancy, the most current published map produced by the California State Board of Equalization (SBE) takes precedence. This map is for illustrative purposes only. Copyright © 2005 Sonoma County Information Systems Department, GIS Central, email requests to: [gis@sonoma-county.org](mailto:gis@sonoma-county.org)

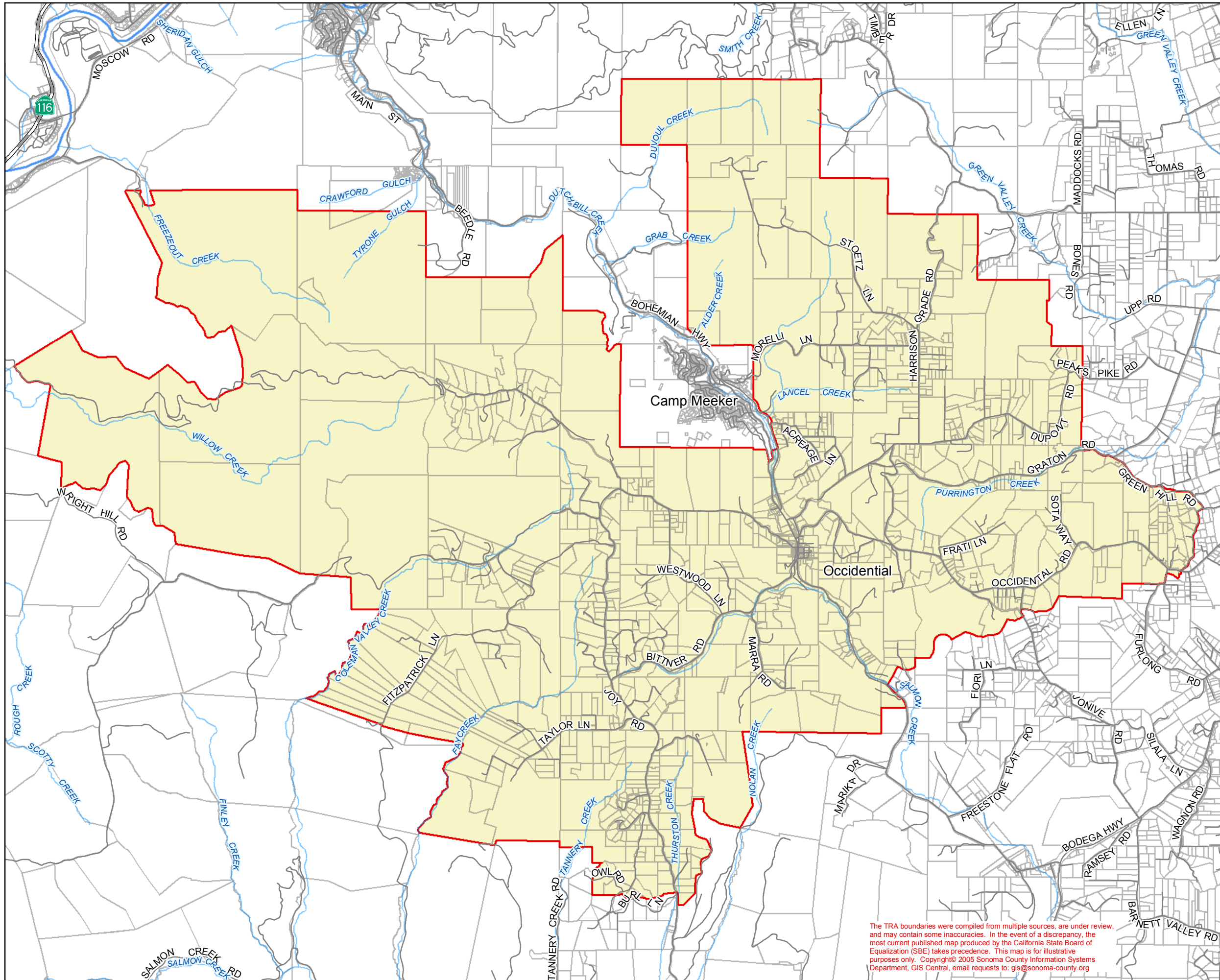
**CAZADERO COMMUNITY SERVICES DISTRICT**

<span style="display: inline-block; width: 15px; height: 10px; background-color: yellow; border: 1px solid black;"></span>	CAZADERO COMMUNITY SERVICES DISTRICT (TRA FY 05 - 06)
<span style="display: inline-block; width: 15px; height: 10px; border: 2px solid red;"></span>	SPHERE OF INFLUENCE
<span style="display: inline-block; width: 15px; height: 10px; border: 1px solid gray;"></span>	COUNTY OF SONOMA GIS PARCELS
	FREEWAY
	HIGHWAY
	STREET
	RIVER
	CREEK

DATE: 11/03/2005

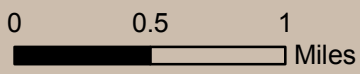
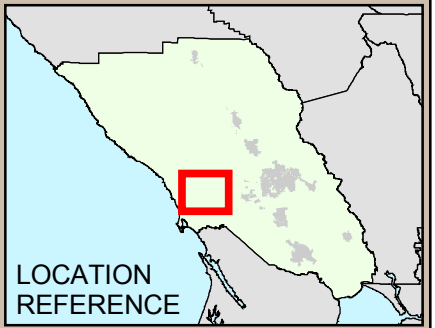
**LOCATION REFERENCE**

- Author: County of Sonoma Information Systems Department GIS Central
- Projection & Coordinate System Tics: California State Plane Coordinate System, Zone II, NAD 83, US survey feet, Lambert Conformal Conic. Some data have been reprojected from other coordinate systems and may not reflect actual ground positions.
- Document Source and Date: sc-gisdb2\gisdata2\projects\LAFCO\Special District\Fire\CazCommSD\_v9.mxd.
- Data Source: Sonoma County Information Systems Department GIS Central, SBE, Sonoma County Assessor



# OCCIDENTAL COMMUNITY SERVICES DISTRICT

- OCCIDENTAL COMMUNITY SERVICES DISTRICT (TRA FY 05 - 06)
  - SPHERE OF INFLUENCE
  - COUNTY OF SONOMA GIS PARCELS
  - FREEWAY
  - HIGHWAY
  - STREET
  - RIVER
  - CREEK
- DATE: 11/07/2005


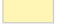




- Author:  
County of Sonoma Information Systems Department GIS Central
- Projection & Coordinate System Tics:  
California State Plane Coordinate System, Zone II, NAD 83, US survey feet, Lambert Conformal Conic.  
Some data have been reprojected from other coordinate systems and may not reflect actual ground positions.
- Document Source and Date:  
sc-gisdb2\gisdata2\projects\LAFCO\SpecialDistrictsReviewProject\water\occidentalcsd\_water\_v9.mxd
- Data Source:  
Sonoma County Information Systems Department GIS Central, SBE, Sonoma County Assessor




The TRA boundaries were compiled from multiple sources, are under review, and may contain some inaccuracies. In the event of a discrepancy, the most current published map produced by the California State Board of Equalization (SBE) takes precedence. This map is for illustrative purposes only. Copyright © 2005 Sonoma County Information Systems Department, GIS Central, email requests to: [gis@sonoma-county.org](mailto:gis@sonoma-county.org)

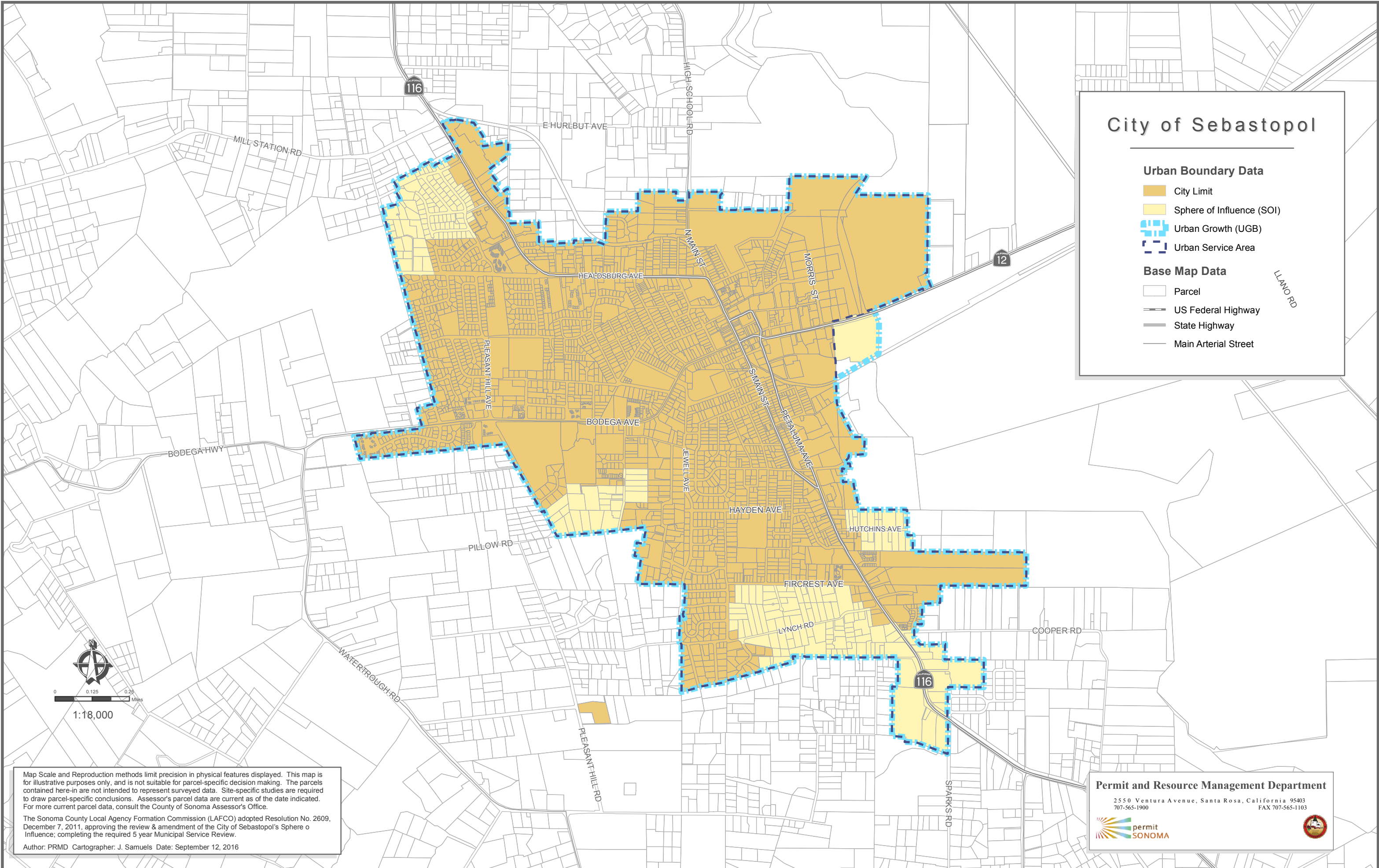
# City of Sebastopol

## Urban Boundary Data

-  City Limit
-  Sphere of Influence (SOI)
-  Urban Growth (UGB)
-  Urban Service Area

## Base Map Data

-  Parcel
-  US Federal Highway
-  State Highway
-  Main Arterial Street



0 0.125 0.25 Miles

1:18,000

Map Scale and Reproduction methods limit precision in physical features displayed. This map is for illustrative purposes only, and is not suitable for parcel-specific decision making. The parcels contained here-in are not intended to represent surveyed data. Site-specific studies are required to draw parcel-specific conclusions. Assessor's parcel data are current as of the date indicated. For more current parcel data, consult the County of Sonoma Assessor's Office.

The Sonoma County Local Agency Formation Commission (LAFCO) adopted Resolution No. 2609, December 7, 2011, approving the review & amendment of the City of Sebastopol's Sphere of Influence; completing the required 5 year Municipal Service Review.

Author: PRMD Cartographer: J. Samuels Date: September 12, 2016

## Permit and Resource Management Department

2550 Ventura Avenue, Santa Rosa, California 95403  
707-565-1900 FAX 707-565-1103

