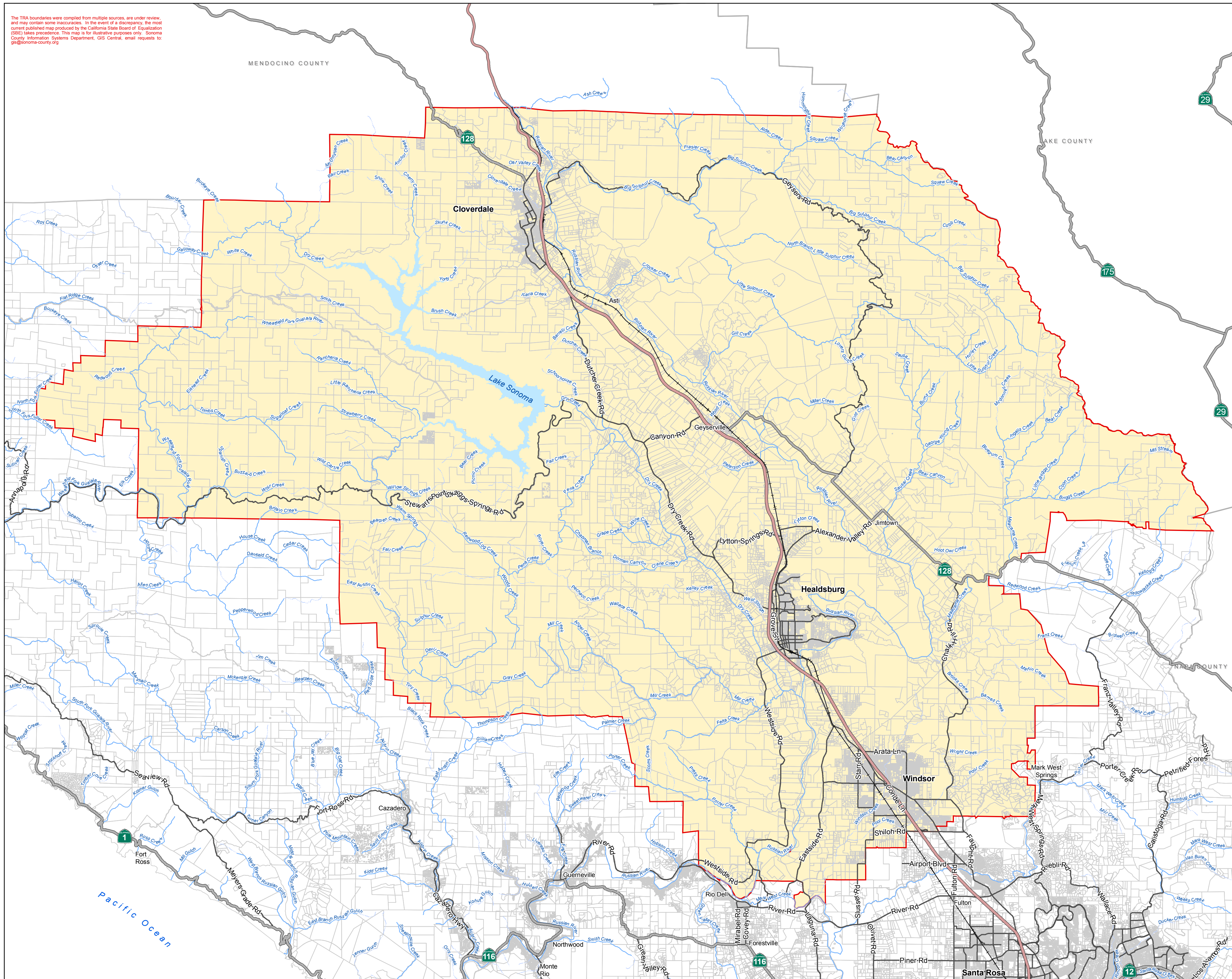




The TRA boundaries were compiled from multiple sources, are under review, and may contain some inaccuracies. In the event of a discrepancy, the most current published map produced by the California State Board of Equalization (SBE) takes precedence. This map is for illustrative purposes only. Sonoma County Information Systems Department, GIS Central, email requests to: [gis@sonoma-county.org](mailto:gis@sonoma-county.org)

COUNTY OF SONOMA

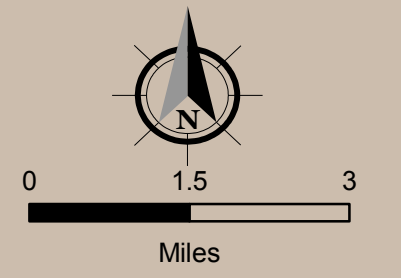
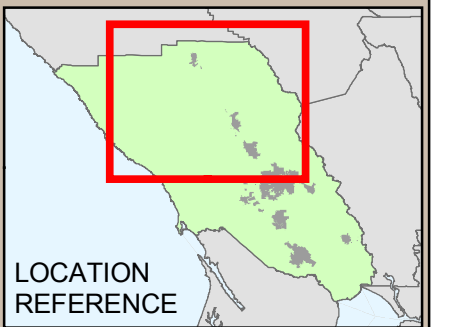


# North Sonoma County Hospital District

- North Sonoma County Hospital District, SBE (Assessment Year 2010-2011)
- Sphere of Influence
- Freeway
- Highway
- Railway (Track)
- Primary Rd
- FillRds/Cvldle
- Perennial Stream
- Intermittent Stream
- County of Sonoma GIS Parcel

DATE: 05/18/2011

Approved by LAFCO on February 2, 2011



- Author: LAFCO
- Projection & Coordinate System Tics: California State Plane Coordinate System, Zone II, NAD 83, US survey feet, Lambert Conformal Conic. Some data have been reprojected from other coordinate systems and may not reflect actual ground positions.
- Document Source and Date: <file:///C:/GIS/Projects/LAFCO/SpDistRev2011/NSCoHC.mxd>
- Data Source: Sonoma County Information Systems Department GIS Central, SBE 10-11 Assessment Year, Sonoma County Assessor, LAFCO