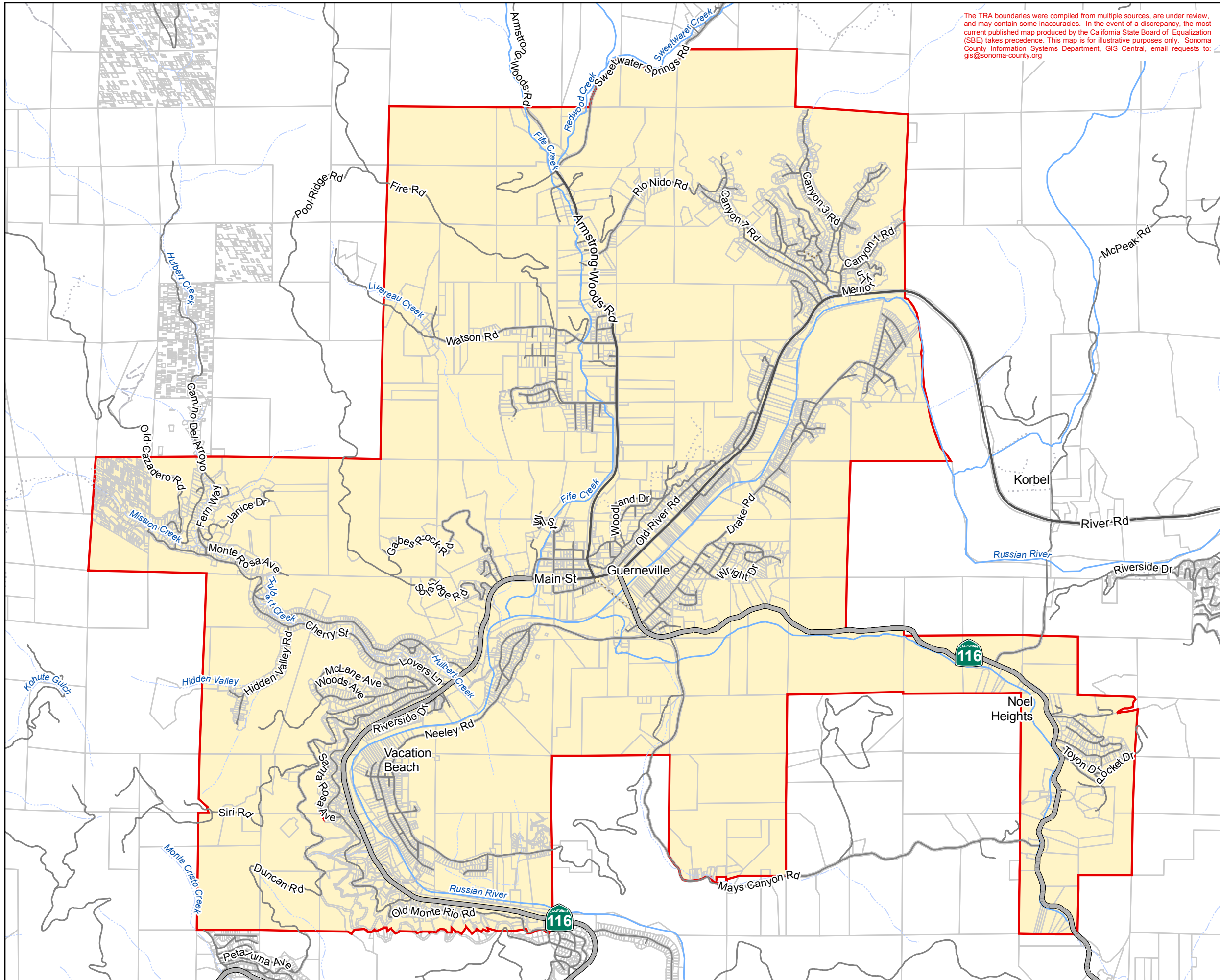




C O U N T Y O F S O N O M A



Russian River Recreation & Park District

- Russian River Recreation & Park District, SBE (Assessment Year 2010-2011)
- Sphere of Influence
- County of Sonoma GIS Parcel
- Freeway
- Highway
- Railway (Track)
- Primary Rd
- Secondary Rd
- Interchange
- Access Rd
- Private Rd
- Path
- Perennial Stream
- Intermittent Stream

DATE: 05/17/2011

Approved by LAFCO on February 2, 2011



- Author: LAFCO
- Projection & Coordinate System Tics: California State Plane Coordinate System, Zone II, NAD 83, US survey feet, Lambert Conformal Conic. Some data have been reprojected from other coordinate systems and may not reflect actual ground positions.
- Document Source and Date: \\sc-gis\gdata\GIS Projects\LAFCO\SpDistRev2011\RRRRecPrk.mxd
- Data Source: Sonoma County Information Systems Department GIS Central, SBE 10-11 Assessment Year, Sonoma County Assessor, LAFCO